

Toasty

by Jo Morton

Finished size 44³/₄" x 44³/₄"



makoweruk

118 Grey's Road, Henley on Thames, Oxon RG9 1QW

www.makoweruk.com Email: info@makoweruk.com



www.andoverfabrics.com

Toasty Quilt by Jo Morton

I adore small block quilts, these are 3" Sawtooth Star blocks made from 'Ember Reds & Evergreens' mixed with 'Toasty' by Andover fabrics. For a change of pace I decided to make Nine Patch blocks with the small stars, the 4 alternate blocks are Snowball blocks with brown prints for the corners.

The quilt was intended to be set straight, and seeing the quilt on point on the ironing board changed my mind, we used the same fabric as in the Snowball blocks for the large corner triangles. We took the corners off the center once it was turned on point to make the setting triangles smaller. The slim outer border is a nice frame and echos the star blocks as cornerstones. It is a nice cheery quilt!

Finished size - quilt - 44 3/4" x 44 3/4"
block - 3" x 3"

Yardage

1 yard total of assorted backgrounds from 'Toasty' for block piecing
1 yard of print from 'Toasty' for setting and alternate blocks
3/4 yard assorted prints from 'Ember Reds & Evergreens' for Star blocks and Nine Patch setting
1/4 yard cheddar print from 'Ember Reds & Evergreens' for Inner Pieced Border
1 1/4 yard red print from 'Ember Reds & Evergreens' for Outer Border (cut lengthwise)



Binding: use the same red print as in the Outer Border for Single Fold Binding, you will cut the Binding after cutting away the borders

Batting: 48" x 48"

Backing: 1 1/3 yard

Mountain Mist Blue Ribbon 100% cotton batting used and recommended for vintage appeal.

Tip: a scant 1/4" is a thread or two less than a full 1/4", as a thread or two is taken up in the pressing.

Cutting

Star Block Cutting

For each block:

- (1) - 2" x 2" square from a light print for the center
- (4) - 1 1/4" x 1 1/4" squares from light print for corners

- (4) - 1 5/8" x 1 5/8" squares from a dark print for the star points
- (1) - 2 3/4" x 2 3/4" square from a light print

Cut for 29 star blocks, 4 of these are for the cornerstones in the outer border.

Setting

for the Nine Patch blocks

- (4) - 3 1/2" x 3 1/2" squares for each of the five blocks - we used different print sets for each block.

for the Snowball blocks

- (4) - 9 1/2" x 9 1/2" squares from a light print
- (16) - 3 1/2" x 3 1/2" squares from brown prints for the corners

Inner Border

- (9) - 4 1/4" x 4 1/4" square from cheddar print
- (36) - 2 3/8" x 2 3/8" squares from background print

Setting Corners

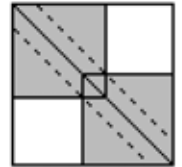
- (2) - 20" x 20" squares, but in half on the diagonal

Outer Border

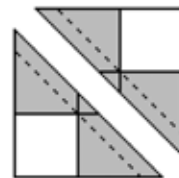
- (4) - 3 1/2" x 38 3/4" lengthwise cut strips (you may wish to cut these longer, then measure across your quilt top and recut to your measurement.

Make the Star Blocks

Make the Flying Geese units portion of the star blocks first

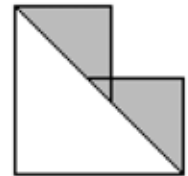


1. Draw a diagonal line on the wrong side of (4) - 1 5/8" x 1 5/8" light squares. Align two of these squares on opposite corners of the cheddar 2 3/4" x 2 3/4" square, right sides together, sew with a scant 1/4"



seam on both sides of the drawn line. The squares do overlap in the center.

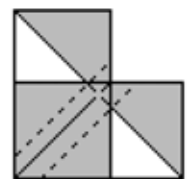
2. Cut apart on the drawn line.



3. Press toward the small triangles.

4. Place one light 1 5/8" square on the corner of the large triangle.

Note direction of the diagonal line - toward the center. Sew a scant 1/4" seam on each side of the drawn line. Cut apart on the drawn line, press toward the dark triangles. Repeat for remaining unit.



5. This will make (4) Flying Geese units for a block.

Square these units to measure: $1\frac{1}{4}'' \times 2''$.

6. Lay out the squares and *Geese* units to assemble the Sawtooth Star as shown.



Sew into rows.



Press row 1 toward corners.

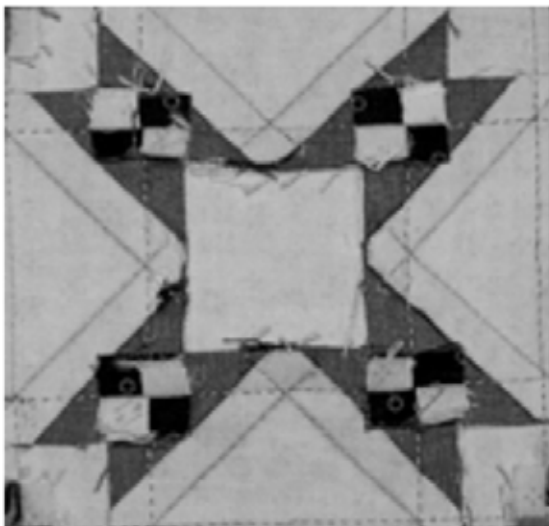


Press row 2 toward center.

Press row 3 toward corners.

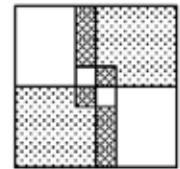
7. Pin the rows together, matching seam intersections, sew.

Use the 'Clipping Trick', described at the top of the next column, at the (4) seam intersections, press the *Flying Geese* unit



toward the center, press the corners toward the corners, press the seam intersections open.

(this is back of block for pressing)



Clipping Trick

Clip up to seam line $\frac{1}{4}''$ on both sides of the seam intersection (the clips will

be $\frac{1}{2}''$ apart), note that the clips are lined up with the outside edge of the seam allowance.

Now you can press the seam allowance in the direction it would like to lay and reduce the layers. See how nice and flat your block lays.

The blocks should measure $3\frac{1}{2}'' \times 3\frac{1}{2}''$, trim them if necessary.

Make the 29 Sawtooth Star blocks.

Make the Snowball blocks

8. Draw a diagonal line on the (4) dark squares for each block. Place the squares on the corners of the block. Sew slightly (a thread or two) outside the line, trim away the corner leaving a $\frac{1}{4}''$ seam allowance. Press the seams toward the corners. Square up the blocks to measure $9\frac{1}{2}'' \times 9\frac{1}{2}''$.

Make four of these blocks.



11. Arrange the blocks to make the quilt center as shown above.

Sew to make rows, press seams toward the snowball blocks.

Pin the rows together, matching seam intersections, sew. Use the 'Clipping Trick' described on page 3 at the seam intersections, continue to press seams toward the snowball blocks and press the clipped intersections open.

Assemble the quilt top center

9. Arrange (5) of the star blocks with (4) alternate squares to form a Nine Patch.

10. Sew to make rows, press toward the alternate block.

Pin the rows together, matching seam intersections, sew.

Use the 'Clipping Trick' described on page 3 at the seam intersections.

Continue to press seams toward the alternate block, press the clipped intersections open.

The block should measure 9 1/2" x 9 1/2"

make the remaining 4 patchwork blocks in the same manner.



Inner Border

12. This Inner Border is made with the no-waste Flying Geese method as in the Star blocks.

Draw a diagonal line on the wrong side of (4) - 2 3/8" x 2 3/8" light squares. Align two of these squares on opposite corners of a 4 1/4" cheddar square, right sides together, sew with a scant 1/4" seam on both sides of the drawn line. (see page 2 for graphics)

13. Cut apart on the drawn line.



14. Press seam toward the small triangles.

15. Place one light 2 3/8" square on the corner of the large triangle. Note

the direction of the diagonal line - toward the center. Sew with a scant 1/4" seam on both sides of the drawn line. Cut apart on the drawn line, press seam toward the light triangles. Repeat for remaining unit.

This will make (4) Flying Geese units. Square these units to measure 2" x 3 1/2".

Make the remaining 8 sets, for a total of 36 Flying Geese units.

16. Arrange the Flying Geese units side by side with the cheddar side toward the quilt, around the quilt center, 9 units per side.

Sew to make the rows, press these seams open.

You will have to un-sew light triangles from both ends of the 4 rows, see picture above.

17. Pin, matching seam intersections, sew two borders to opposite sides to the quilt center. Press seams open to reduce the bulk.

18. Pin the remaining two borders to opposite sides of the quilt center, matching seam intersections, sew. Press seams open to reduce the bulk.

19. Pin the long edge of two large setting triangles to opposite sides of the quilt, sew, press seams toward the triangles.

20. Pin the long edge of two large setting triangles to the remaining sides of the quilt, sew, press seams toward the triangles.

21. The triangles were cut oversize, square up the quilt center, allowing for the 1/4" seam allowance.

Outer Border

22. Measure across your quilt top and re-cut the 4 border strips to this measurement.

Pin two of the borders to opposite sides of the quilt top, sew. Press seams toward the border.

23. Sew the Sawtooth Star blocks to the ends of the remaining border strips, press seams toward the border.

24. Pin these borders to the quilt top, matching seam intersections, sew. Use the 'Clipping Trick' at the seam intersections,

press the seams toward the border, press the clipped intersections open.

The quilt top should measure 44 3/4" x 44 3/4"

Quilting

This quilt was beautifully custom machine quilted by Maggi Honeyman, Plano, Texas.

The Nine Patch star blocks were quilted in a cross-hatch design using the star grid as a basis for the quilting.

The Snowball blocks were quilted in a feather wreath, the outer edge of the feather is echoed with another row of quilting, then it was stipple quilted around the wreath edges to the edge of the block and it makes the feather wreath outstanding! The triangle corners on the snowball blocks were quilted in a 5 petal design that filled the triangles.

The cheddar pieced border had 3 petal designs in each of the cheddar triangles and each of the background triangles.

The large setting triangles feature two half feather wreaths surrounded by stippling. The red print outer border was quilted in a cross-hatch design.

The quilting really enhances the quilt, and for once I left room for beautiful feather wreaths and beautiful quilting design.

I like to use a Single Fold Binding on all my quilts large or small as that is what I see on the 19th Century quilts. You can have a nice narrow flat binding for your quilt. Enjoy!

All rights reserved
1801 Central Avenue
Nebraska City, NE 68410
Phone 402-873-3846
email: joquilts@mac.com / www.jomortonquilts.com

© Jo Morton Quilts 2011

Toasty by Jo Morton for Andover Fabrics

from makoweruk +44(0)1491 579727

www.makoweruk.com



5199/L



5203/Y



5203/B



5199/N



5186/N



5201/E



5201/O



5201/K



5202/O



5200/O



5200/R



5202/N



5204/L



5204/N



5188/N



Quilt designed by Jo Morton

Quilt features Toasty and Ember Reds & Evergreens collection.
Available to download FREE April 2011 www.makoweruk.com

Ember Reds and Evergreens by Jo Morton for Andover Fabrics

from makoweruk +44(0)1491 579727 www.makoweruk.com



5178/R



5180/R



5180/G



5178/G



5179/R



5179/Y



5179/K



5179/G



5181/N



5182/N



5182/G



5181/G



5183/R



5186/R



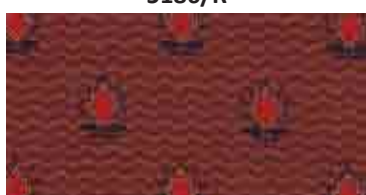
5186/G



5183/G



5184/R



5185/N



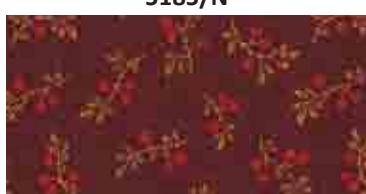
5185/G



5184/N



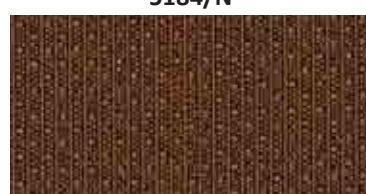
5188/R



5189/N



5189/K



5188/G



5187/R



5187/K



5187/Y



5178/Y

EMBER REDS AND EVERGREENS QUILT Finished size 54" x 64"
Download FREE quilt pattern www.makoweruk.com