

Rosebud Faire



Quilt designed by Jean Ann Wright

Finished size: 88" x 109"



1384 Broadway
New York, NY 10018
(800) 223-5678
www.andoverfabrics.com

Fabrics by
Renée Nanneman

makower uk®

Rosebud Faire Quilt

Introducing Andover Fabrics new collection: Rosebud Faire by Renée Nanneman
Quilt designed by Jean Ann Wright

Fabric Requirements

		Yardage	Fabric
Fabric A	block 1	1¼ yards	5483-R
Fabric B	outer border	1¾ yards	5484-R
Fabric C	inner border	1¼ yards	5485-L
Fabric D	block 1	1½ yards	5486-L
Fabric E	block 3, sashes	2 yards	5487-L
*Fabric F	block 2	¼ yard	5488-N
Fabric G	sashes, leaves	1½ yards	5489-V
Fabric H	flowers, block 2	1½ yards	5490-E
Fabric I	blocks 1 & 2	⅝ yard	4064-N2
Fabric J	flowers	⅛ yard	4264-E
Fabric K	flowers, binding	1¼ yards	4265-R
*Backing Fabric		8 yards	5488-N

Quilt finishes: 88" x 109"

12 Block 1: 16" x 16"

20 Block 2: 5" x 5"

4 Block 3: 10" x 10"

Romantic, feminine prints in soft hues make this the perfect quilt for a girl of any age. Only 12 large blocks are needed to make this bed-size quilt. Simple appliquéd flowers can be stitched with traditional methods or fused and finished as desired.

Cutting Directions

Note: Borders are cut the exact lengths required plus ¼" seam allowances. WOF designates the width of fabric from selvedge to selvedge (approximately 42" wide).

Fabric A Cut (24) rectangles 4½" x 8½"
Cut (24) squares 4½" x 4½"

Fabric B Cut (2) borders 6½" x 89½", cut crosswise and pieced
Cut (2) borders 6½" x 68½", cut crosswise and pieced

Fabric C Cut (2) borders 4½" x 89½", cut crosswise and pieced
Cut (2) borders 4½" x 68½", cut crosswise and pieced

Fabric D Cut (24) squares 8½" x 8½"

Fabric E Cut (31) rectangles 3½" x 16½"
Cut (4) squares 10½" x 10½"

***Fabric F** Cut (20) squares 3½" x 3½"

Fabric G Cut (62) rectangles 1½" x 16½"
Cut 16 leaves

Fabric H Cut (80) rectangles 1½" x 3½"
Cut 28 large flowers

Fabric I Cut (24) squares 4½" x 4½"
Cut (80) squares 1½" x 1½"

Fabric J Cut (28) flower centers

Fabric K Cut (10) strips 2½" x WOF for binding
Cut (28) small flowers

***Backing** Cut (3) panels 39" x 96", pieced to fit quilt top with 4" overlap on all sides.

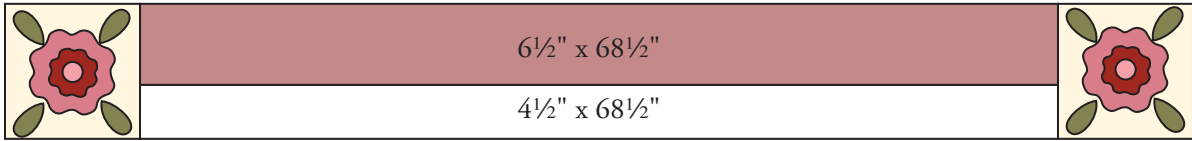
Fusible appliqué

Note: To make it easier to align the leaves, fold the 10½" E squares diagonally in half both ways and lightly finger press the folds. The templates are printed without turn-under allowance for use with fusible web. Trace each motif onto the paper side of fusible web. Cut each shape outside the traced line, leaving a margin of the webbing all around the shape. Following manufacturer's instructions, press traced patterns to wrong side of fabrics. Cut out parts on the drawn lines.

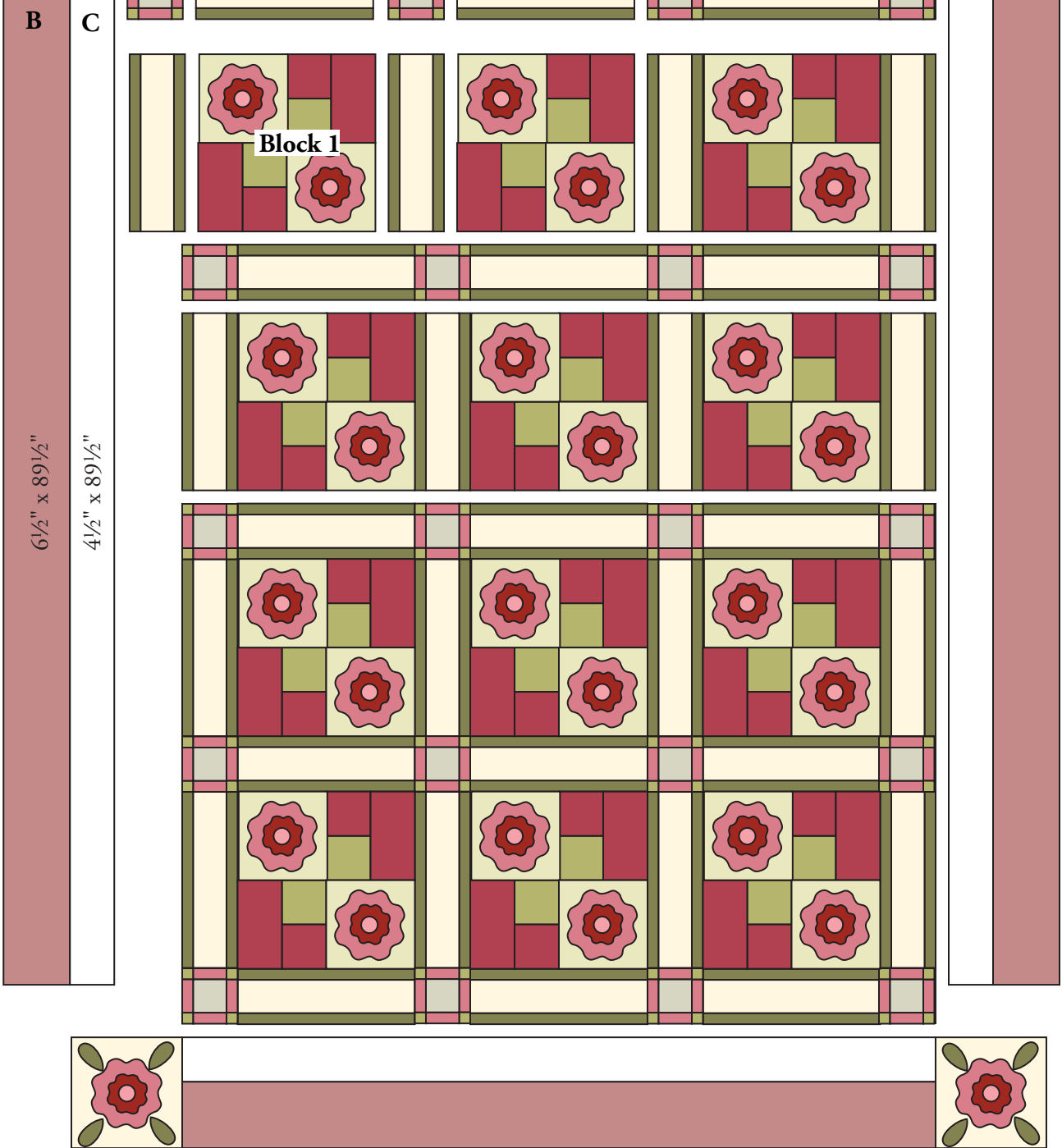
Use the full-size pattern to help position the patches in the center of each background D or E square. Align the leaves along the diagonal fold lines of the E's. Fuse each patch to the square, following manufacturer's instructions, beginning with the underneath patch. Finish the edges with a decorative machine stitch using contrasting thread, or use an invisible thread with a blind appliqué machine stitch.

Rosebud Faire Quilt

Block 3

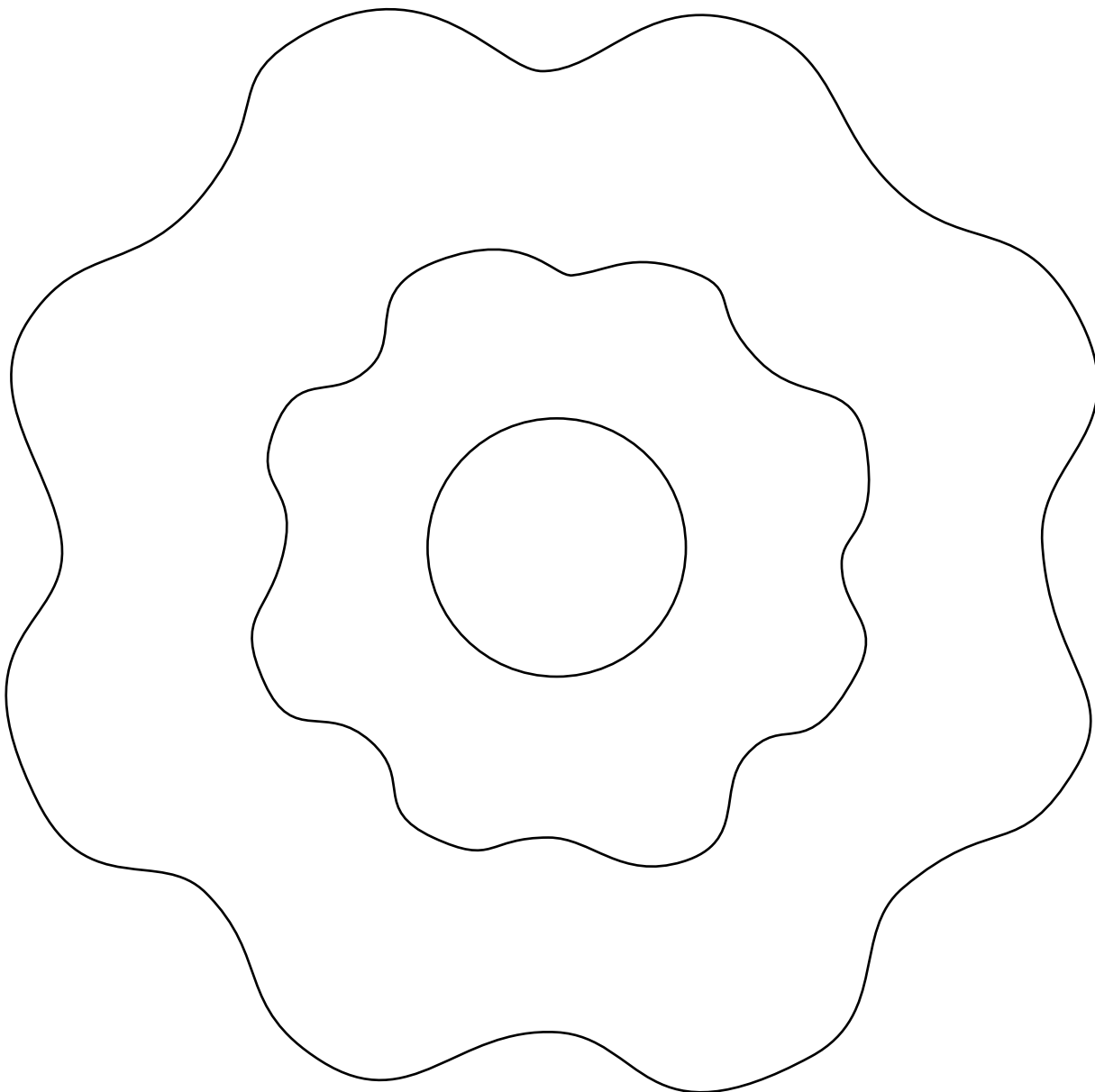
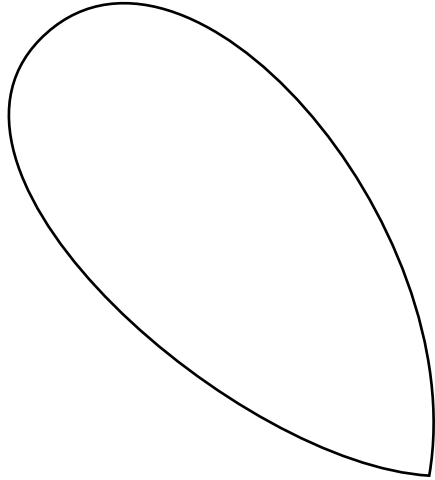


Block 2



Quilt Diagram

Full Size Appliqué Patterns for Rosebud Faire



Rosebud Faire

by Renee Nanneman



5483-L



5483-N



5483-R*



5484-E



5484-R*



5485-L*



5485-N



5486-L*



5486-R



5487-L*



5487-N



5488-E



5488-N*



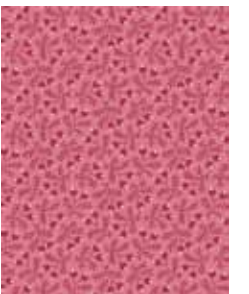
5489-L



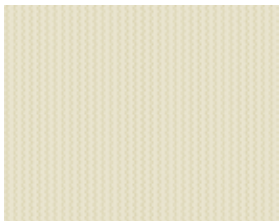
5489-V*



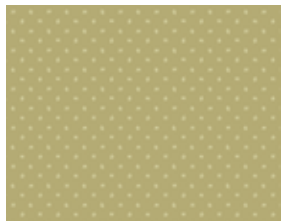
5490-L



5490-E*



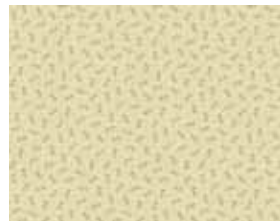
3940-L



4064-N2*



4065-V



4263-L



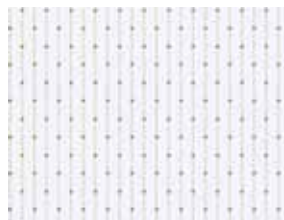
4264-E*



4265-R*



4923-L



4928-N



4933-C

*Indicates fabric used in quilt pattern. Fabrics shown are 25% of actual size.

Rosebud Faire Quilt - European Version

Size: Approx 67 inches square

Fabric Amounts:

Fabric A-5483R	35cm
Fabric B- 5484R	85cm
Fabric C-5485L	85cm
Fabric D-5486L	45cm
Fabric E-5487L	90cm
Fabric F-5488N	10cm
Fabric G5489V	45 cm
Fabric H-5490E	70 cm
Fabric I-4064N2	25 cm
Fabric J-4264E	15 cm
Fabric K-4265R	60 cm
Backing Fabric -5488N	3.6 metres



Cutting Directions

Fabric A	Cut (8) rectangles 4 ½ x 8 ½ inches Cut (8) squares 4 ½ x 4 ½ inches
Fabric B	Cut (5) border strips 6 ½ inches x WOF
Fabric C	Cut (5) border strips 4 ½ inches x WOF, centralising the pattern
Fabric D	Cut (8) squares 8 ½ x 8 ½ inches
Fabric E	Cut (12) rectangles 3 ½ x 16 ½ inches Cut (4) squares 10 ½ x 10 ½ inches
Fabric F	Cut (9) squares 3 ½ x 3 ½ inches
Fabric G	Cut (24) rectangles 1 ½ x 16 ½ inches Cut 16 leaves
Fabric H	Cut (48) rectangles 1 ½ x 3 ½ inches Cut 12 Large Flowers
Fabric I	Cut (12) squares 4 ½ x 4 ½ inches Cut (48) squares 1 ½ x 1 ½ inches
Fabric J	Cut 12 Flower Centres
Fabric K	Cut (6) strips 2 ½ x WOF for binding Cut 12 small flowers

Making the Quilt

Following the pattern instructions, make:

4 x Block 1

4 x Block 3

9 x Block 2

12 x Sash

Assemble the quilt as described in the pattern, but using the smaller number of blocks