

FOUR ALL SEASONS FALL



Fabrics by Kim Schaefer



makower uk

1384 Broadway • New York, NY 10018
(800) 223-5678 • www.andoverfabrics.com

Quilt designed by Jean Ann Wright

Quilt size: 71" x 92"

8/26/10

Four All Seasons – Fall Quilt

Introducing Andover Fabrics new collection: *Four All Seasons – Fall* by Kathy Schaefer
Quilt designed by Jean Ann Wright

Quilt finishes 71" x 92"
12 blocks 12" x 12"

Fabric Requirements

		Yardage	
Fabric A	vertical strips	1¼ yards	5284-N
Fabric B	borders	1¾ yards	5333-N
Fabric C	blocks	¾ yard	5285-N
Fabric D	blocks	¾ yard	5286-N
Fabric E	blocks	½ yard	5288-Y
Fabric F	borders	⅞ yard	5309-Y
Fabric G*	borders	⅞ yard	5289-N
Fabric H	borders	⅞ yard	3104-O
Fabric I	vertical strips	1 yard	5287-N
Fabric J	blocks	⅞ yard	3135-02
Fabric K	blocks/borders	⅔ yard	5292-G
Fabric L	borders	⅝ yard	3135-K
Fabric M	blocks/borders	⅞ yard	3135-V2
*Additional fabric required for backing			
Backing		5½ yards	5289-N

The popular motifs and colors of fall are prominent in this beautiful quilt. The pieced blocks are a Fancy Maple Leaf pattern stitched in colors taken from a sugar maple tree...one of the most colorful displays that Mother Nature provides.

Fabric G Cut (11) strips 2" x WOF; piece together to make (6) 2" x 72½" border strips
Cut (1) strip 3½" x WOF; crosscut strip into (12) 3½" squares

Fabric H Cut (2) strips 4½" x WOF; crosscut strips into (24) 2½" rectangles
Cut (1) strip 3½" x WOF; crosscut strip into (12) 3½" squares
Cut (9) strips 1½" x WOF; piece together to make (2) 1½" x 75" and (2) 1½" x 96" border strips

Fabric I Cut (9) strips 1" x WOF; piece together to make (6) 1" x 72½" strips
Cut (1) strip 3½" x WOF; crosscut strip into (12) 3½" squares
Cut (6) strips 2½" x WOF; crosscut strips into (96) 2½" squares

Fabric J Cut (4) strips 4½" x WOF; crosscut strips into (42) 2½" rectangles and (6) 4½" squares
Cut (1) strip 3½" x WOF; crosscut strip into (12) 3½" squares
Cut (2) strips 2½" x WOF for J-K strips

Fabric K Cut (12) 1¼" x 5" bias strips
Cut (1) strip 3½" x WOF; crosscut strip into (12) 3½" squares
Cut (2) strips 2½" x WOF for K-M strips
Cut (2) strips 2½" x WOF for J-K strips

Fabric L Cut (9) strips 1½" x WOF; piece together to make (2) 1½" x 75" and (2) 1½" x 96" border strips
Cut (1) strip 3½" x WOF; crosscut strip into (12) 3½" squares

Fabric M Cut (1) strip 3½" x WOF; crosscut strip into (12) 3½" squares
Cut (4) strips 4½" x WOF; crosscut strips into (42) 2½" rectangles and (6) 4½" squares
Cut (2) strips 2½" x WOF for K-M strips

Backing Cut (2) panels 42" x 100" and piece to fit quilt top with 4" overlap on all sides

Cutting Directions

Note: All fabrics except A and B are used for prairie points.

Fabric A Cut (3) sets of (2) identical 5½" x WOF strips with motifs centered; piece the two pieces of each set together and trim to make a total of (3) 5½" x 72½" fabric A strips

Fabric B Cut (9) strips 6½" x WOF; piece together to make (2) 6½" x 75" and (2) 6½" x 96" border strips

Fabric C Cut (1) strip 4½" x WOF; crosscut strip into (6) 4½" squares
Cut (1) strip 3½" x WOF; crosscut strip into (12) 3½" squares

Fabric D Cut (1) strip 4½" x WOF; crosscut strip into (6) 4½" squares
Cut (1) strip 3½" x WOF; crosscut strip into (12) 3½" squares

Fabric E Cut (2) strips 4½" x WOF; crosscut strips into (24) 2½" x 4½" rectangles
Cut (1) strip 3½" x WOF; crosscut strip into (12) 3½" squares

Fabric F Cut (9) strips 2½" x WOF; piece together to make (2) 2½" x 75" and (2) 2½" x 96" border strips
Cut (1) strip 3½" x WOF; crosscut strip into (12) 3½" squares

Four All Seasons – Fall Quilt

Preparing Stem Pieces

1. Fold each 1/4" x 5" bias strip in half with wrong sides together along length; stitch a 1/4" seam allowance along the raw edges to make a tube. Trim seam allowance to 1/8" and press the tube flat, centering the seam on one side; press the seam open to complete the stem pieces. *Note: Using a 3/8" bias bar when pressing helps keep the seam centered while making it easier to press.*
2. Cut (12) 3/8" x 5" pieces of 3/8"-wide fusible web. Iron a piece to the wrong side of each prepared stem piece; remove paper backing.

Completing the Blocks

3. Arrange a prepared stem piece on each 4 1/2" fabric M square referring to Diagram 1. When satisfied with positioning, fuse stem in place. Repeat on each remaining fabric M square and on all 4 1/2" fabric J squares, again referring to Diagram 1. Machine-stitch in place on each edge as desired.
4. Mark a diagonal line from corner to corner on each 2 1/2" fabric I square. Referring to Diagram 2, place one fabric I square right sides together on one end of a 2 1/2" x 4 1/2" fabric M rectangle; stitch on the marked line. Trim seam allowance to 1/4" and press the fabric I piece to the right side. Repeat on the opposite end of the fabric M rectangle to complete an I-M unit. Repeat to make 24 I-M units.
5. Repeat step 4 with fabric I squares and 2 1/2" x 4 1/2" fabric J rectangles to make 24 I-J units, referring to Diagram 2.
6. Sew a 2 1/2"-wide fabric K strip to a 2 1/2"-wide fabric M strip along length to make a K-M strip; press seam toward fabric K strip. Repeat to make a second K-M strip. Crosscut the K-M strips into (18) 2 1/2" K-M units referring to Diagram 3.
7. Repeat step 6 with the 2 1/2"-wide fabric K strips and the 2 1/2"-wide fabric J strips to make (18) J-K units, again referring to Diagram 3.
8. Referring to Diagram 4, sew a 2 1/2" x 4 1/2" fabric M rectangle to a K-M unit to make an M corner unit; press seam toward fabric M rectangles. Repeat to make 18 M corner units. Repeat with the 2 1/2" x 4 1/2" fabric J rectangles and the J-K units to make 18 J corner units referring to Diagram 4.
9. Referring to Diagram 4, sew a 2 1/2" x 4 1/2" fabric H rectangle to an I-M unit to make an H side unit; press seam toward the fabric H rectangle. Repeat to make a total of 24 H side units. Repeat with the 2 1/2" x 4 1/2" fabric E rectangles and the I-J units to make a total of 24 E side units.
10. To complete an orange Fancy Maple Leaf block, join the corner and side units with the 4 1/2" fabric C or D squares and the stem units to make a total of six each green and orange Maple Leaf blocks referring to Diagram 5. Press seams toward the C and D squares in the center rows and away from the side units in the top and bottom rows.

12. Sew a 4 1/2" fabric D square between two side units to make the center row; press seams toward the fabric D square.
13. Sew a side unit between a 4 1/2" fabric G stem square and a corner unit to make the bottom row; press seams away from the side unit.
14. Sew the center row between the top and bottom rows to complete one Fancy Maple Leaf block; press seams toward the center row.
15. Repeat steps 8–13 to complete a total of six orange Fancy Maple Leaf blocks.
16. Repeat steps 8–13 with the 2 1/2" x 4 1/2" fabric J and fabric E rectangles, the 4 1/2" fabric C squares, the J-K and I-J units and the 4 1/2" fabric J stem squares to make six Fancy Maple Leaf blocks referring to Diagram 5.



Diagram 1



Diagram 2

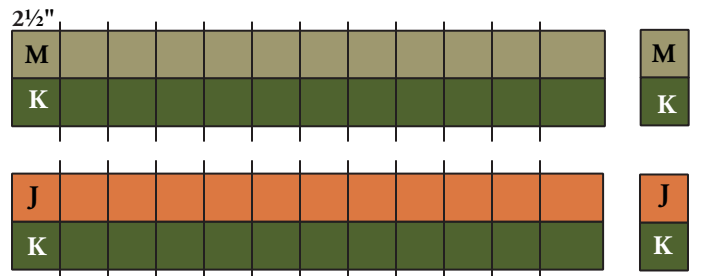


Diagram 3

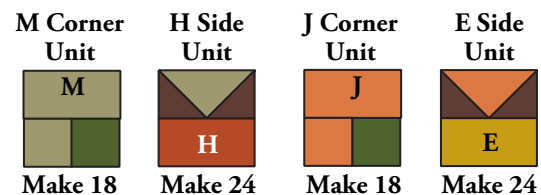


Diagram 4

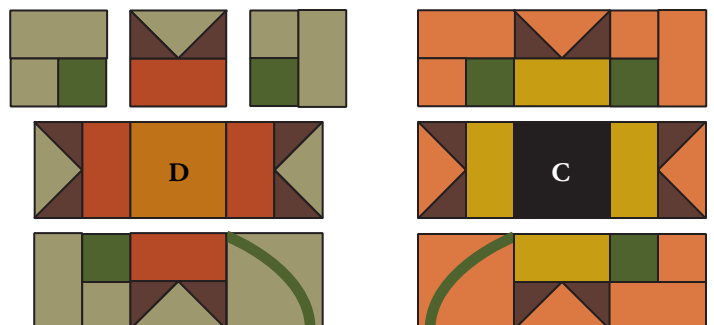


Diagram 5

Four All Seasons – Fall Quilt

Completing the Quilt Top

- Referring to Diagram 6, sew a 1" x 72½" fabric I strip and a 2" x 72½" fabric G strip to opposite sides of each fabric 5½" x 72½" A strip to make a vertical strip. Press seams away from the fabric A strip. Repeat to make three vertical strips.
- Referring to Diagram 7, join three each orange and green Fancy Maple Leaf blocks to make a block row, alternating positioning of the blocks. Press seams in one direction. Repeat to make a second block row.
- Join the two blocks rows with the three vertical strips to complete the quilt center. Press seams away from the block rows.
- Sew a 2½" x 96" fabric F strip between one each 1½" x 96" fabric H and fabric L strip and add a 6½" x 96" fabric B strip to the L side to make a side border strip. Press seams toward the fabric B strip. Repeat to make a second side border strip.
- Repeat step 19 with the 75" strips to make two short border strips.
- Fold the quilt center in half on both length and width; crease to mark centers, then unfold. Fold each border strip in half and crease to mark centers. Aligning folds, stitch the side border strips to opposite long sides and the short border strips to the top and bottom of the pieced center, beginning and ending ¼" from corners of quilt center; miter border corners and trim excess fabric. Press seam allowances toward the strips.

Making and Adding Prairie Points

- Select a total of (110) 3½" squares from the previously cut squares. **Note:** *You have cut more squares than you need to allow for a variety of layouts.* To make a prairie point referring to Diagram 8, fold a square in half with wrong sides together to make a rectangle; fold each corner of the top folded edge down to meet the bottom raw edges to form a triangle with an opening in the center and press to complete a prairie point. Baste in place. Repeat to make a total of 110 prairie points.
- Arrange, pin and baste 31 prairie points to each long side of the quilt center, overlapping points as necessary referring to the Quilt Diagram. **Note:** *The prairie points may be arranged in a planned repetitive pattern or random order as desired.* Repeat with 31 more prairie points on the opposite long side and 24 each on the top and bottom of the quilt center.



Make 3
Diagram 6

Make 1
Diagram 7

Make 1

Diagram 8

Make 110

Four All Seasons – Fall Quilt

Finishing the Quilt

23. Layer quilt top with batting and backing. Quilt in the ditch of seams and as desired, stopping quilting 1" from the edges all around. Trim batting even with quilt edges; trim backing $\frac{1}{2}$ " beyond quilt edges all around.
24. Turn under the backing edges $\frac{1}{2}$ "; hand- or machine-stitch backing edges in place at quilt edges and quilt remaining unquilted area on the edge to finish.



Quilt Diagram

Four All Seasons – Fall

by Kim Schaefer



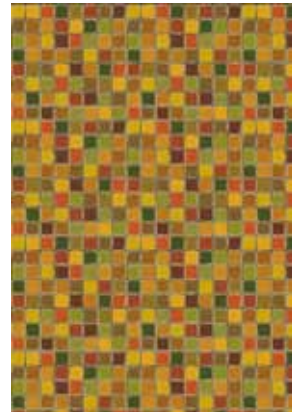
5284-N



5333-N



5285-N



5286-N



5287-N



5309-Y



5289-N



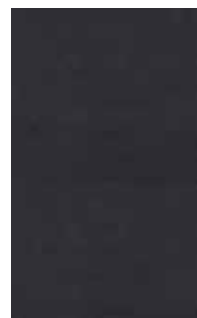
3104-O



3135-O2



3135-V2



3135-K



5292-G



5288-Y

All fabrics used in quilt pattern. Fabrics shown are 15% of actual size.

Four All Seasons

Smaller European version additional instructions

Fabric Requirements

(These do not include enough fabrics if you decide to finish quilt with Prairie Points)

Fabric A	5284-N	40cm
Fabric B	5333-N	1 m
Fabric C	5285-N	15cm
Fabric D	5286-N	15cm
Fabric E	5288-Y	15cm
Fabric F	5309-Y	40cm
Fabric G	5289-N	25cm
Fabric H	3104-O	40cm
Fabric I	5287-N	25cm
Fabric J	3135-02	20cm
Fabric K	5292-G	25cm
Fabric L	3135-K	25cm
Fabric M	3135-V2	15cm



Cutting Instructions:

- Fabric A – Cut 2 strips WOF x 5 ½" with motifs centred
- Fabric B – Cut 6 strips WOF x 6 ½". Piece together to make border strips (2) 6 ½ x 54" and (2) 6 ½ x 60"
- Fabric C – Cut 1 strip WOF x 4 ½" :From this, cut 2 squares 4 ½ x 4 ½"
- Fabric D – Cut 1 strip WOF x 4 ½" :From this, cut 1 square 4 ½ x 4 ½"
- Fabric E – Cut 1 strip WOF x 4 ½" :From this, cut 8 rectangles 2 ½ x 4 ½"
- Fabric F – Cut 6 strips WOF x 2 ½". Piece together to make border strips (2) 2 ½ x 54" and (2) 2 ½ x 60"
- Fabric G – Cut 4 strips WOF x 2"
- Fabric H – Cut 1 strip WOF x 4 ½":From this, cut 4 rectangles 2 ½ x 4 ½". Cut 6 strips WOF x 1 ½" Piece together to make border strips (2) 1 ½ x 54" and (2) 1 ½ x 60"
- Fabric I – Cut 4 strips WOF x 1", cut 2 strips WOF x 2 ½";From this cut 24 squares 2 ½ x 2 ½"
- Fabric J – Cut 1 strip WOF x 4 ½" :From this cut 8 rectangles 2 ½ x 4 ½" and 2 squares 4 ½ x 4 ½" Cut 1 strip WOF x 2 ½" :From this, cut 6 squares 2 ½ x 2 ½"
- Fabric K - Cut 1 strip WOF x 2 ½":From this, cut 9 squares 2 ½ x 2 ½ inches Cut 1 bias strips 1 ¼ x 5 "
- Fabric L - Cut 6 strips WOF x 1 ½ " :Piece together to make border strips (2) 1 ½ x 54" and (2) 1 ½ x 60"
- Fabric M – Cut 1 strip WOF x 4 ½" :From this, cut 4 rectangles 4 ½ x 2 ½" and 1 square 4 ½ x 4 ½" and 3 squares 2 ½ x 2 ½"

Instructions (refer to pattern)

Preparing Stem Pieces

Make 3 stem pieces

Completing the Blocks

Make 4 I-M units

Make 8 I-J units

Make 3 K-M units

Make 6 J-K units

Referring to diagrams 4 and 5, make a total of 1 green and 2 orange Maple leaf blocks, and join them to make a block row

Make 2 vertical strips with Fabric A, Fabric I and Fabric G (finished width 9 ½"), and sew these to either side of block row, matching motifs. Trim to same length as block row.

Join H, F, L and B outer border strips, making 2 borders 54" long, and 2 borders 60" long

Join these borders to the quilt; mitre the border corners and trim excess fabric

Layer the quilt with backing and wadding, and finish with straight edge binding.