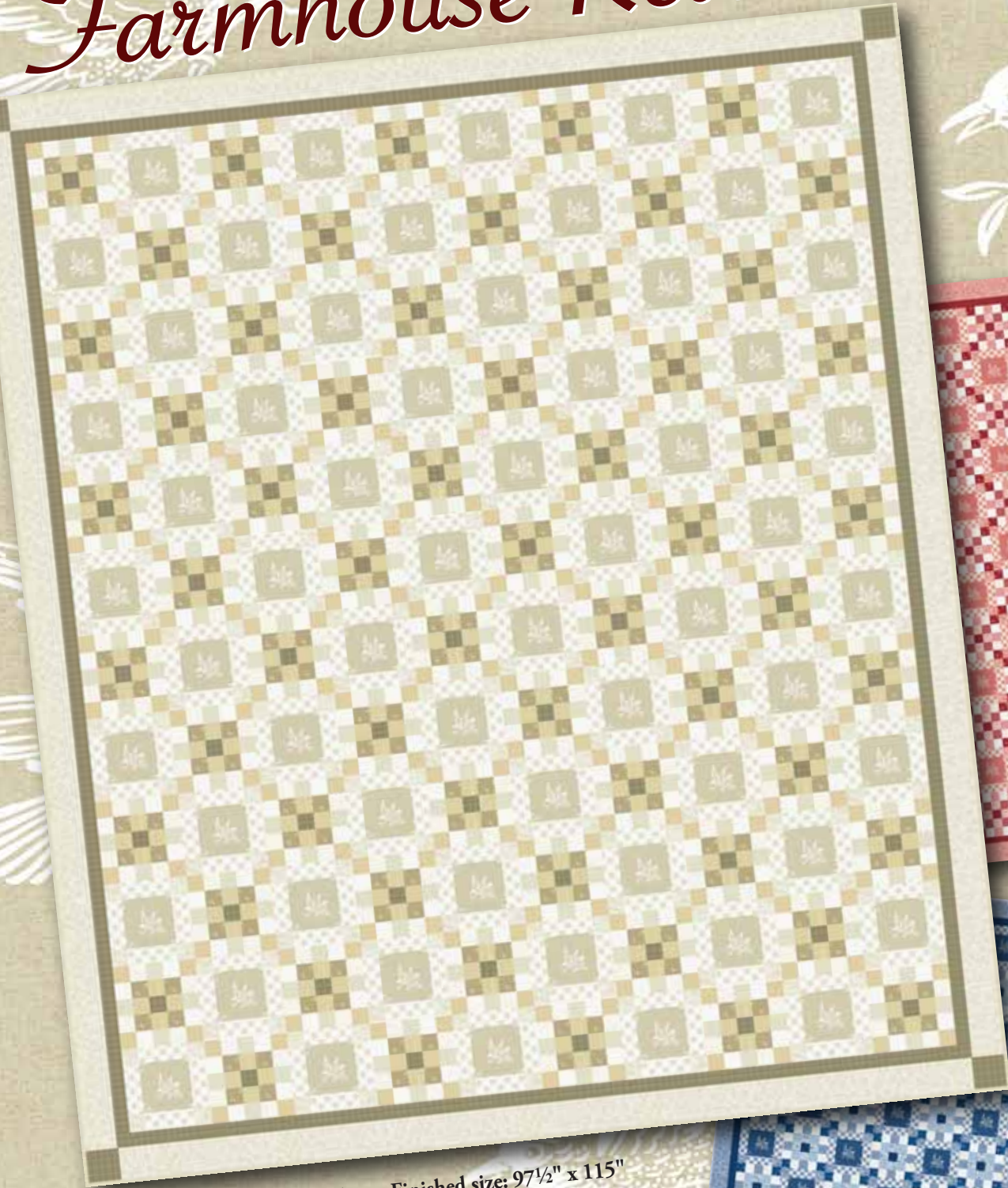


Farmhouse Retreat



Quilt designed by Gail Kessler • Finished size: 97½" x 115"
Also available in Nap, Twin and Queen sizes

Fabrics by Renée Nanneman



makower uk

1384 Broadway
New York, NY 10018
(800) 223-5678
www.andoverfabrics.com

Revised
4/7/11

Farmhouse Retreat Quilt

Introducing Andover Fabrics new collection: Farmhouse Retreat by Renee Nanneman
Quilt designed by Gail Kessler

Quilt finishes in 4 sizes:
King size: 97½" x 115"
Queen size: 88¾" x 106½"
Twin size: 71¼" x 97½"
Nap size: 53¾" x 71¼"

Fast and accurate strip piecing makes short work of the classic Irish Chain pattern. Choose one of the four popular sizes to make the one that's just right for snuggling at your own special retreat.

Note: WOF designates the width of fabric from selvedge to selvedge (approximately 42" wide).

* fussy-cut these patches, centering the square on a bird motif

** pieced to fit quilt top with 4" overlap

Fabric and Cutting Requirements

King Size: 97½" x 115"

60 Irish chain blocks 8¾" x 8¾"

60 alternate blocks 8¾" x 8¾"

		Yardage	Beige	Pink	Blue
Fabric A	14 strips 2¼" x WOF	1 yard	5337-L	3943-E	3943-B
Fabric B	14 strips 2¼" x WOF	1 yard	5341-L	5341-E	5341-B
Fabric C	21 strips 2¼" x WOF	1½ yards	5339-L	5339-E	5339-B
Fabric D	14 strips 2¼" x WOF	1 yard	4923-L	5340-E	5340-B
Fabric E	14 strips 2¼" x WOF 11 strips 4" x WOF, pieced and cut to make 2 outer side borders 4" x 108½" and 2 top/bottom borders 4" x 94"	2¼ yards	5336-L	5336-E	5336-B
Fabric F	14 strips 2¼" x WOF	1 yard	5340-L	4918-E	3942-B
Fabric G	21 strips 2¼" x WOF	1½ yard	4263-L	5337-E	5337-B
Fabric H	7 strips 2¼" x WOF 11 strips 2" x WOF, pieced and cut to make 2 inner side borders 2" x 105½" 2 top/bottom borders 2" x 91" (4) squares 4" x 4"	1¼ yards	4933-C	4068-R	4933-B
Fabric I*	(60) squares 5¾" x 5¾"	2¼ yards	5335-L	5335-E1	5335-B
Fabric J	7 strips 5¾" x WOF (120) rectangles 2¼" x 5¾"	2½ yards	5338-L	5338-E	5338-B
Binding	12 strips 2½" x WOF	1 yard	3940-L	4929-R	4934-B
Backing	3 panels WOF x 92"***	9 yards	5337-L	5337-E	5337-B

Farmhouse Retreat Quilt

Fabric and Cutting Requirements

Queen size: 88³/₄" x 106¹/₂"

50 Irish chain blocks 8³/₄" x 8³/₄"

49 alternate blocks 8³/₄" x 8³/₄"

		Yardage	Beige	Pink	Blue
Fabric A	12 strips 2 ¹ / ₄ " x WOF	1 yard	5337-L	3943-E	3943-B
Fabric B	12 strips 2 ¹ / ₄ " x WOF	1 yard	5341-L	5341-E	5341-B
Fabric C	18 strips 2 ¹ / ₄ " x WOF	1 ¹ / ₄ yards	5339-L	5339-E	5339-B
Fabric D	12 strips 2 ¹ / ₄ " x WOF	1 yard	4923-L	5340-E	5340-B
Fabric E	12 strips 2 ¹ / ₄ " x WOF 10 strips 4" x WOF, pieced and cut to make 2 outer side borders 4" x 96 ³ / ₄ " and 2 top/bottom borders 4" x 82 ¹ / ₄ "	2 yards	5336-L	5336-E	5336-B
Fabric F	12 strips 2 ¹ / ₄ " x WOF	1 yard	5340-L	4918-E	3942-B
Fabric G	18 strips 2 ¹ / ₄ " x WOF	1 ¹ / ₄ yards	4263-L	5337-E	5337-B
Fabric H	6 strips 2 ¹ / ₄ " x WOF 10 strips 2" x WOF, pieced and cut to make 2 inner side borders 2" x 96 ³ / ₄ " and 2 top/bottom borders 2" x 82 ¹ / ₄ " (4) squares 4" x 4"	1 ¹ / ₄ yards	4933-C	4068-R	4933-B
Fabric I*	(49) squares 5 ³ / ₄ " x 5 ³ / ₄ "	2 yards	5335-L	5335-E1	5335-B
Fabric J	6 strips 5 ³ / ₄ " x WOF (98) rectangles 2 ¹ / ₄ " x 5 ³ / ₄ "	2 ¹ / ₈ yards	5338-L	5338-E	5338-B
Binding	11 strips 2 ¹ / ₂ " x WOF	⁷ / ₈ yard	3940-L	4929-R	4934-B
Backing	3 panels WOF x 92"***	9 yards	5337-L	5337-E	5337-B

Fabric and Cutting Requirements

Twin size: 71¹/₄" x 97¹/₂"

35 Irish chain blocks 8³/₄" x 8³/₄"

35 alternate blocks 8³/₄" x 8³/₄"

		Yardage	Beige	Pink	Blue
Fabric A	8 strips 2 ¹ / ₄ " x WOF	⁵ / ₈ yard	5337-L	3943-E	3943-B
Fabric B	8 strips 2 ¹ / ₄ " x WOF	⁵ / ₈ yard	5341-L	5341-E	5341-B
Fabric C	12 strips 2 ¹ / ₄ " x WOF	1 yard	5339-L	5339-E	5339-B
Fabric D	8 strips 2 ¹ / ₄ " x WOF	⁵ / ₈ yard	4923-L	5340-E	5340-B
Fabric E	8 strips 2 ¹ / ₄ " x WOF 9 strips 4" x WOF, pieced and cut to make 2 outer side borders 4" x 91" and 2 top/bottom borders 4" x 67 ³ / ₄ "	1 ⁵ / ₈ yards	5336-L	5336-E	5336-B
Fabric F	8 strips 2 ¹ / ₄ " x WOF	⁵ / ₈ yard	5340-L	4918-E	3942-B
Fabric G	12 strips 2 ¹ / ₄ " x WOF	1 yard	4263-L	5337-E	5337-B
Fabric H	4 strips 2 ¹ / ₄ " x WOF 8 strips 2" x WOF, pieced and cut to make 2 inner side borders 2" x 88" and 2 top/bottom borders 2" x 64 ³ / ₄ " (4) squares 4" x 4"	⁷ / ₈ yard	4933-C	4068-R	4933-B
Fabric I*	(35) squares 5 ³ / ₄ " x 5 ³ / ₄ "	1 ¹ / ₂ yards	5335-L	5335-E1	5335-B
Fabric J	4 strips 5 ³ / ₄ " x WOF (70) rectangles 2 ¹ / ₄ " x 5 ³ / ₄ "	1 ¹ / ₂ yards	5338-L	5338-E	5338-B
Binding	10 strips 2 ¹ / ₂ " x WOF	⁷ / ₈ yard	3940-L	4929-R	4934-B
Backing	3 panels WOF x 75"***	6 ⁵ / ₈ yards	5337-L	5337-E	5337-B

Farmhouse Retreat Quilt

Fabric and Cutting Requirements

Nap size: 53³/₄" x 71¹/₄"

18 Irish chain blocks 8³/₄" x 8³/₄"

17 alternate blocks 8³/₄" x 8³/₄"

		Yardage	Beige	Pink	Blue
Fabric A	4 strips 2 ¹ / ₄ " x WOF	3/8 yard	5337-L	3943-E	3943-B
Fabric B	4 strips 2 ¹ / ₄ " x WOF	3/8 yard	5341-L	5341-E	5341-B
Fabric C	6 strips 2 ¹ / ₄ " x WOF	5/8 yard	5339-L	5339-E	5339-B
Fabric D	4 strips 2 ¹ / ₄ " x WOF	3/8 yard	4923-L	5340-E	5340-B
Fabric E	4 strips 2 ¹ / ₄ " x WOF 6 strips 4" x WOF, pieced and cut to make 2 outer side borders 4" x 64 ³ / ₄ " and 2 top/bottom borders 4" x 50 ¹ / ₄ "	1 yard	5336-L	5336-E	5336-B
Fabric F	4 strips 2 ¹ / ₄ " x WOF	3/8 yard	5340-L	4918-E	3942-B
Fabric G	6 strips 2 ¹ / ₄ " x WOF	5/8 yard	4263-L	5337-E	5337-B
Fabric H	2 strips 2 ¹ / ₄ " x WOF 6 strips 2" x WOF, pieced and cut to make 2 inner side borders 2" x 61 ³ / ₄ " and 2 top/bottom borders 2" x 47 ¹ / ₄ " (4) squares 4" x 4"	5/8 yard	4933-C	4068-R	4933-B
Fabric I*	(17) squares 5 ³ / ₄ " x 5 ³ / ₄ "	5/8 yard	5335-L	5335-E1	5335-B
Fabric J	2 strips 5 ³ / ₄ " x WOF (34) rectangles 2 ¹ / ₂ " x 5 ³ / ₄ "	1 ¹ / ₂ yards	5338-L	5338-E	5338-B
Binding	7 strips 2 ¹ / ₄ " x WOF	1/2 yard	3940-L	4929-R	4934-B
Backing	2 panels WOF x 58"*	3 ¹ / ₂ yards	5337-L	5337-E	5337-B

Strip Piecing Chart

	King	Queen	Twin	Nap
Band 1	7	6	4	2
Band 2	7	6	4	2
Band 3	4	3	2	1
Band 4	7	6	4	2

D
A
C
B
D

Band 1

B
F
G
F
A

Band 2

C
G
H
G
C

Band 3

E
J
E

Band 4

D	A	C	B	D
B	F	G	F	A
C	G	H	G	C
A	F	G	F	B
D	B	C	A	D

Irish Chain Block

E	J	E
J	I	J
E	J	E

Alternate Block

Farmhouse Retreat Quilt

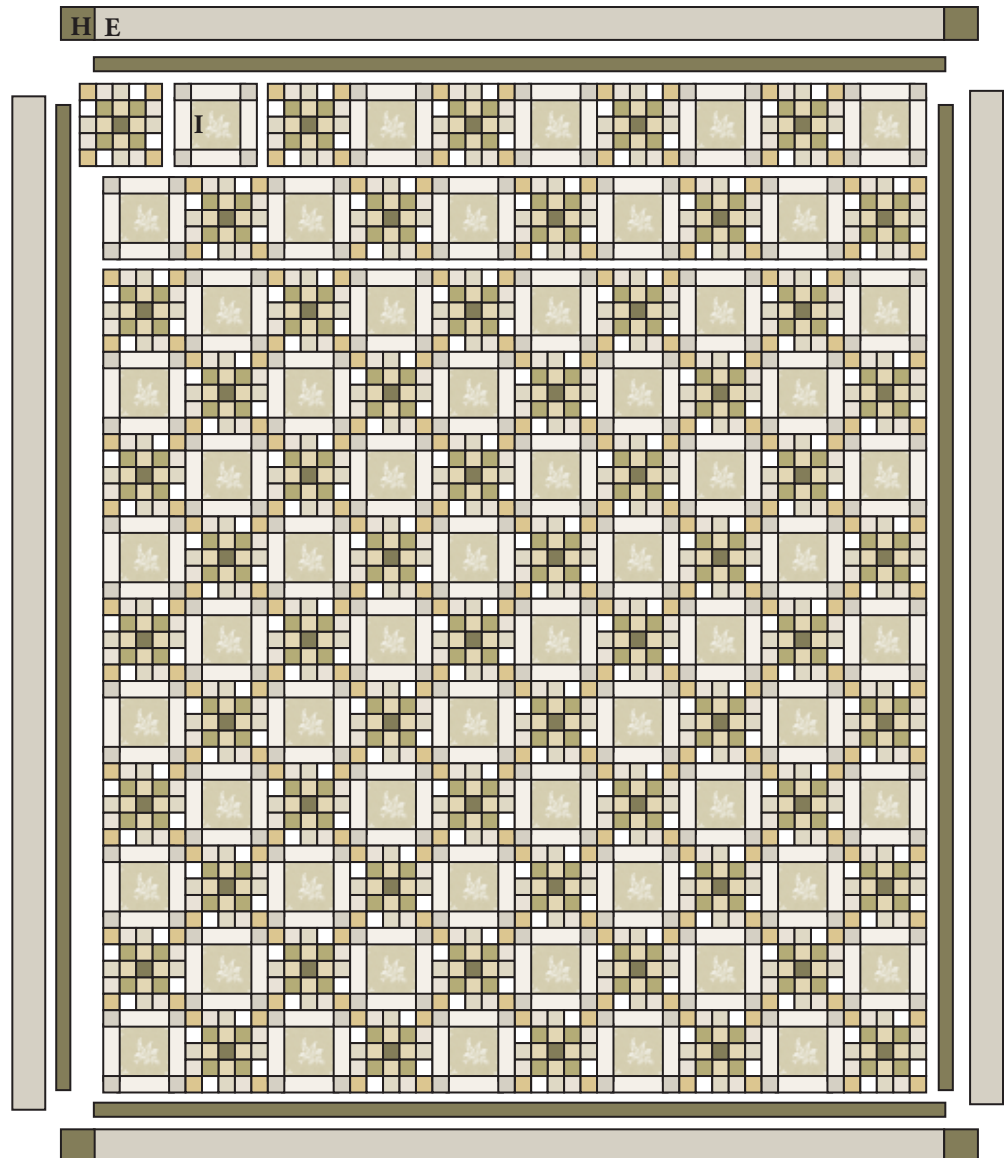
Making & Assembling the Quilt

1. Refer to the fabric and cutting requirements for the quilt size you want to make. Cut the strips and patches as instructed.
2. Referring to the band diagrams and the strip piecing chart, join 2¼" strips as indicated to make the number of bands 1, 2, and 3 required for your chosen quilt size. With a rotary cutter and ruler, cut each band into 2¼" segments. Referring to the Irish Chain block diagram, join (2) segments from band 1, (2) segments from band 2, and (1) segment from band 3, noting the orientation of the segments. Make the required number of Irish chain blocks for your chosen quilt.
3. Similarly, make the required number of band 4s. Cut each band 4 into 2¼" segments. Referring to the alternate block diagram, sew a fabric J rectangle to the top and bottom of a fussy-cut fabric I square. Sew a band 4 segment to each side. Make the required number of alternate blocks.
4. Referring to the quilt assembly diagram, arrange the Irish chain blocks alternately with the alternate blocks, starting with an Irish chain in the upper left corner. Join the blocks into rows. Join the rows.
5. Matching centers and ends, sew the longer inner borders to the sides of the quilt. Similarly, sew the shorter inner borders to the top and bottom of the quilt.

6. Matching centers and ends, sew the longer outer borders to the sides of the quilt. Sew a fabric H square to each end of the remaining outer borders. Matching centers, ends, and side seams, sew these borders to the top and bottom of the quilt.

Finishing the Quilt

7. Layer quilt with batting and backing. Quilt in the ditch around borders and block patches. Quilt around the printed motif in the alternate blocks if desired. Bind to finish the quilt.



Quilt Assembly Diagram

Farmhouse Retreat

by Renée Nanneman



5335-L



5336-L



5337-L



5338-L



5339-L



5340-L



5341-L



3940-L



3941-L



4263-L



4923-L



4933-C



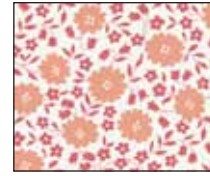
5335-E



5335-E2



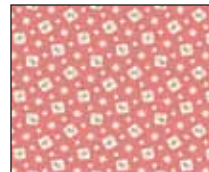
5336-E



5337-E



5338-E



5339-E



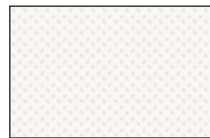
5340-E



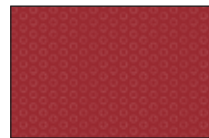
5341-E



3942-E



3943-E



4068-R



4918-E



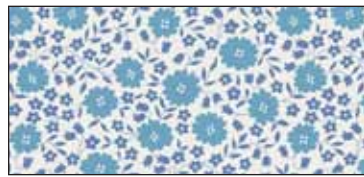
4929-R



5335-B



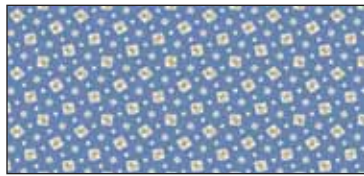
5336-B



5337-B



5338-B



5339-B



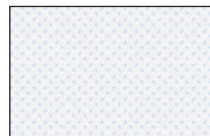
5340-B



5341-B



3942-B



3943-B



3945-C



4933-B



4934-B