

Dino “Quillow-Pack” and Tracks Quilt

by Paula Doyle for **makoweruk**
Finished size 42”x 54” (107 x 137cms)



makoweruk
118 Grey's Road,
Henley on Thames,
Oxon RG9 1QW
www.makoweruk.com
Email: info@makoweruk.com



www.andoverfabrics.com

Dino "Quillow-Pack" Quilt

by Paula Doyle for **makower uk**

Finished size 42"x 54"

IT'S A QUILT, IT'S A QUILLOW, AND IT'S A SLEEPOVER BACKPACK ALL IN ONE!



Quillow-pack backside ↑

Dino Centre Panel
cut one 23½" x 32"

Dino Border Stripe
cut two 10¼" x 32"

Dino Border Stripe
cut two 10¼" x 23½"

Dino Large Squares
cut five 10¼" x 10¼"
(includes Quillow pocket)

FABRIC REQUIREMENTS

CODE	NAME	AMOUNT	USAGE
678/1	PANEL	ONE (24" / 60cms)	CENTRAL PICTURE IN QUILLOW
679/1	10" SQUARES	ONE (24"/60cms)	FOUR CORNERS AND QUILLOW POCKET
675/1	BORDER STRIPE	1 yds / 1,0m	OUTER BORDERS
671/1	PATCHWORK	1¾ yds / 1,60m	BACKING
673/B	BLUE SCATTER	¾ yds / 70cms	BINDING AND QUILLOW POCKET

Two squares of Calico or coordinating fabric - We used 673/B (15" x 15" / 40 x 40cms)

45" x 60" wadding plus two squares 15" x 15" for Quillow pocket.

For Backpack; ¾m of 2" wide elastic / ½m of ¼" wide elastic and three colourful buttons 1½"-2" diameter.

SEWING INSTRUCTIONS

1- Make Dino Quillow-Pack Quilt top:

Cut top and bottom 5½" borders from centre Dino Panel fabric - reserve the two 5½" borders for the quillow pack strap. Cut remaining centre panel to measure 23½" x 32".

Cut out six blocks from the Dino Large Squares fabric to measure 10¼" x 10¼" (just ¼" outside of the coloured border on all sides). Four of these are for the corners of the quilt front, and two are for the quillow pocket on the back side of the quilt.

Cut Dino Border Stripe fabric into four strips 10 1/4" wide from the lengthwise grain of the fabric. Cut two of the strips to measure 32" long for the side borders of the quilt. Cut the remaining two strips to measure 23½" long for the top and bottom borders of the quilt.

Stitch the centre panel, corner squares, top, bottom, left, and right borders together as shown in the picture, using a ¼" seam allowance.

2- Sandwich quilt top, wadding, and Dino Patchwork (671/1) backing fabric. Quilt as desired (Helpful Hint: the easiest way to quilt this is by machine, using a walking foot, and quilting from the backside, using the back fabric design as a stitching guide - our quilt was quilted with lines going diagonally across the design every third square!). Stay-stitch around perimeter of the quilt, about ⅛" in from raw edge of front panel. Trim away any excess backing and wadding.

3- Make the quillow-pack pocket:

Rotary cut 3 strips of Dino Scatter fabric (673-B) 2¾" wide, then cut these to yield four pieces 10¼" long, and four pieces 14½" long.

Using a ¼" seam allowance stitch the 10¼" long pieces to the right and to the left sides of the two 10¼" x 10¼" Large Dino Squares. Stitch the 14½" long pieces to the top and bottom of both squares.

Sandwich both of the resulting 14½" x 14½" squares with the 15" x 15" squares of wadding and calico or coordinating fabric (673-B), then quilt as desired.

Cut one strip of Dino Scatter fabric (673-B) 1¼" wide. Use a ¼" seam allowance to sew this strip into a thin tube of fabric by folding the strip in half lengthwise, right sides in. Cut into three 10" lengths. Turn tubes right side out. Cut the ¼" wide elastic into three 6" long lengths and insert a piece into each of the fabric tubes, gathering fabric as needed, and stitching across the bottom ends by machine, forming each into a loop.

Sandwich and pin the two quilted squares to each other, right sides together. Insert the elastic loops 1" up from the bottom ends on the sides of the squares so that the sewn end of the elastic button loops stick out about ¼". Use a ¼" seam allowance to stitch sides and tops of the two quilted squares together, catching end of elastic button loops into the seam. Clip corners of seam allowances and turn pocket right side out through the open bottom. Top stitch ¼" in from the turned edge. Centre the resulting panel onto the bottom edge back of the quilt, as shown on the diagram. Stitch panel in place on both sides, making sure to fold button loops to the inside of the pocket. Stay-stitch along bottom of pocket ⅛" in from the bottom raw edge of the quilt. Stitch third elastic button loop centred onto the backside of the quilt just above the open top of the quillow pocket.

4- Bind the quilt: Rotary cut five strips of Dino Scatter fabric (673-B) each 2½" wide x WOF. Stitch these strips together lengthwise using diagonal seams to form the binding for the quilt. Fold and press binding strip in half lengthwise, right side out. Using a walking foot, stitch raw edges of binding onto raw edges of quilt using ⅜" seam allowance. Stitch binding onto all four sides of the quilt. Finish hemming binding by hand.

5 - Make strap for "pack": Stitch the two reserved 5½" borders to each other lengthwise, then stitch this into a tube to cover the ¾m piece of 2" wide elastic. Stitch across both ends with a straight stitch and a satin stitch. Affix one button at the centre, and one button onto each of the ends of the elastic strap.

The Dino "Quillow-Pack" is made by folding the quilt into the pocket and attaching the shoulder straps with the buttons through the elasticated button loops.

Congratulations and well done!





Dino Tracks Quilt

BY PAULA DOYLE for makower uk

Finished size 42" x 54" (107 x 137cms)

FABRIC REQUIREMENTS

CODE	DESCRIPTION	AMOUNT
674/X	BLACK SPOTS	¾yds / 70cms
674/Q	CREAM SPOTS	¾yds / 70cms
672/1	CROWD	¾yds / 70cms
680/G	SKIN GREEN	¾yds / 70cms
680/Y	SKIN YELLOW	¾yds / 70cms
680/N	SKIN ORANGE	¾yds / 70cms
680/B	SKIN BLUE	¾yds / 70cms
673/B	SCATTER	½yd / 50cms for binding

Suggestion for backing: make up a Dino Panel Quilt - same as Dino Quillow, minus the backing and Quillow Pocket or 1,4m of another backing fabric.

STEP 1 CUTTING FABRICS



Dino Skin Yellow Fabric

- Rotary cut five squares 6½" x 6½" for plain blocks
- use remainder of fabric to piece nine Dino Track blocks with the Dino Spots Black fabric (directions to follow)



Dino Skin Green Fabric

- Rotary cut four squares 6½" x 6½" for plain blocks
- use remainder of fabric to piece nine Dino Track blocks with the Dino Spots Black fabric (directions to follow)



Dino Skin Orange Fabric

- Rotary cut five squares 6½" x 6½" for plain blocks
- Use remainder of fabric to piece nine Dino Track blocks with the Dino Spots Cream fabric (directions to follow)



Dino Skin Blue Fabric

- use fabric to piece nine Dino Track blocks with the Dino Spots Cream fabric (directions to follow)



Dino Crowd Fabric

- Rotary cut five squares 9¾" x 9¾", then rotary cut each of these diagonally into quarters, cutting each square into four triangles - eighteen of these will be used as setting triangles on sides, top, and bottom of quilt



- Rotary cut two squares 5¼" x 5¼", then rotary each of these diagonally in half, cutting each square into two triangles. These four triangles will be used as corner setting triangles for the quilt blocks.



Dino Scatter Blue Fabric

- Rotary cut five strips 2½" wide x WOF (width of fabric) to use in binding the quilt.



Dino Spots Cream Fabric

- Use fabric to piece nine Dino Track blocks with the Dino Skin Orange fabric (directions to follow)

- Use fabric to piece nine Dino Track blocks with the Dino Skin Blue fabric (directions to follow)



Dino Spots Black Fabric

- Use fabric to piece 9 Dino Track blocks with the Dino Skin Yellow fabric (directions to follow)

- Use fabric to piece 9 Dino Track blocks with the Dino Skin Green fabric (directions to follow)

STEP 2 - FOUNDATION PIECE THE DINO TRACKS BLOCKS

Using the Foundation Piecing pattern, piece the following 6½" x 6½" (measured raw edge to raw edge - finished size will be 6"x 6") blocks:



Make nine blocks using;
Dino Spots black and
dino skin yellow



Make nine blocks using;
Dino Spots black and
dino skin green



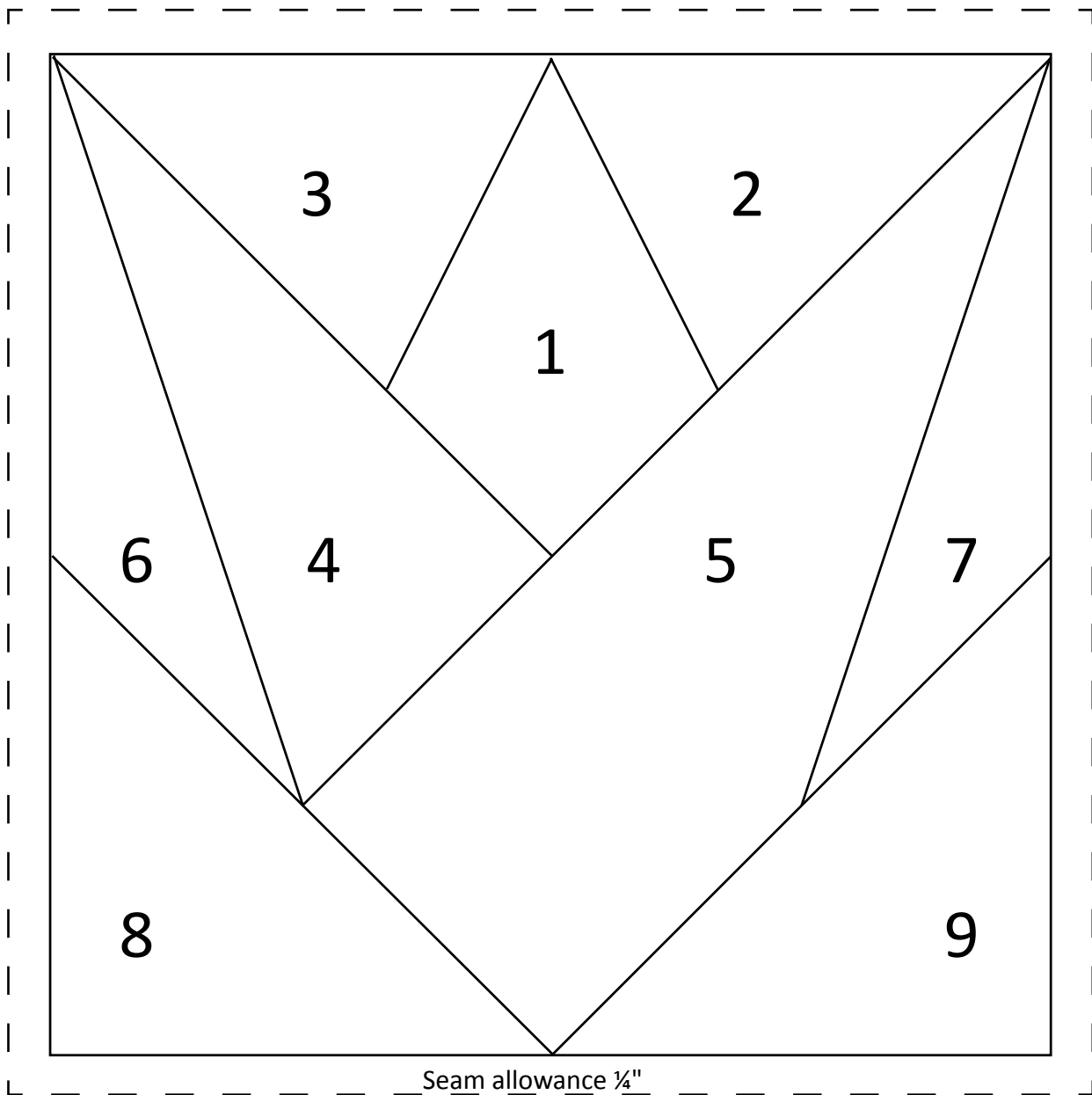
Make nine blocks using;
Dino Spots cream and
dino skin blue



Make nine blocks using;
Dino Spots cream and
dino skin orange

[Foundation Piecing pattern for Dino Tracks Blocks](#)

(numbers in the pattern indicate piecing order)



finished size 6" x 6"

Step 3 - Piece quilt top

Join Dino Tracks blocks, rotary cut plain blocks, and setting triangles using a $\frac{1}{4}$ " seam allowance according to the quilt diagram.

Step 4 - Sandwich and quilt as desired

The size of this quilt is the same as the Dino Panel (see Quillow-Pack quilt pattern) if desired.

Step 5 - Bind Quilt

Stitch the 5 strips of Dino Scatter Blue fabric end-to-end with diagonal seams. Fold and press binding in half lengthwise, right sides out. Stitch binding to quilt edges, and finish hemming binding by hand.

Congratulations and well done!



670/1 LABELS



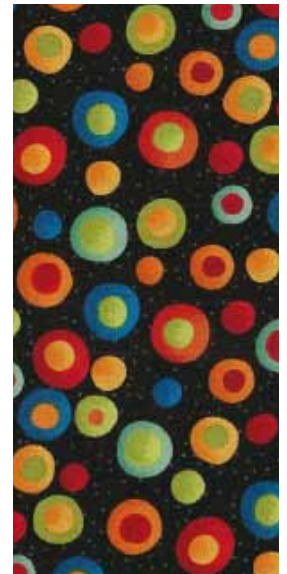
675/1 BORDER



671/1 PATCHWORK



672/1 CROWD



674/X SPOT BLACK



673/Q SCATTER



674/Q SPOT CREAM



676/1 STRIPE



674/B SPOT BLUE



673/B SCATTER



680/Q SKIN



680/Y SKIN



680/G SKIN



680/N SKIN



680/B SKIN



679/1 10"/25CMS PICTURES PANEL REPEAT 24"



678/1 LARGE SCENIC PANEL REPEAT 24"

DINO QUILLOW



DINO TRACKS



DESIGNED BY PAULA DOYLE BOTH 42" x 54" (107 x 137cms)
 CAN BE MADE SEPARATELY OR
 TOGETHER FOR A REVERSIBLE QUILT
 EASY QUILLOW USING LARGE SCENIC PANEL, BORDER AND 10"
 PICTURE PANEL SQUARES
 FOUNDATION PIECED DINO TRACKS USING ALLOVER PRINTS