

CATS

Designed by Hilary Gooding

Finished quilt size 30½" x 37½" (77 cm x 95 cm)

Fabric	Quantity	First cut	Second cut	Position
Panel 595	one	See details below *		Pictures
Labels 592	one strip	See details below **		Pictures
Cats Paws 594/V Cats Paws 594/Q Spraytime 2800/Q04 Cat Scatter 593/Q	Fat Eighth (50 cm x 28 cm)	One strip 1½" wide along the length of the fabric		Small squares
		2⅞" squares: 3 from each fabric		Half-square-triangle blocks
Cats Paws 594/B	25 cm x 115 cm	one strip 3" wide	Cut three 2⅞" squares	Half-square-triangle blocks
		Cut two strips 1½" wide (cut one piece 20" long)		Label frames (Small squares)
		2 strips 2" wide		Picture frames
Cats Paws 594/T	30 cm x 115 cm	one strip 2⅞" wide	Cut two 2⅞" squares	Half-square-triangle blocks
		Cut one strip 1½" wide (cut one piece 20" long)		Label frames (Small squares)
		4 strips 1½" wide	Cut 2 strips 23½" Cut 2 strips 32½"	Inner Border
Cats Paws 594/N	40 cm x 115 cm	one strip 3" wide	Cut two 2⅞" squares	Half-square-triangle blocks
		Cut two strips 1½" wide (cut one piece 20" long)		Label frames (Small squares)
		One strip 2" wide		Label frames
		4 strips 2" wide		Binding
Spraytime 2800/V47	60 cm x 115 cm	4 strips each 3" wide	Cut 2 strips 25½" Cut 2 strips 37½"	Outer Border
		One strip 1½" wide	Cut strip 20" long	Small squares
		2 strips 2" wide		Picture frames
		One strip 2⅞"	Cut one 2⅞" squares Trim remaining piece to 2" wide	Half-square-triangle blocks Picture frame
Your choice	90 cm if not a directional fabric. 1.10 metres if directional.			Backing

SEWING INSTRUCTIONS

All seam allowances are ¼"

Panels *

1. Dandelion Basket. Cut the panel into a 9½" square.
2. Knitting basket. Trim panel to include a ¼" seam outside red outline. Sew a 2" wide brown *Spraytime* strip to each side of the panel. Trim the piece back to a 9½" square.
3. Flower Bag. Trim panel to include a ¼" seam outside blue outline. Sew a 2" wide brown *Spraytime* strip to each side of the panel. Trim the piece back to a 11½" x 6½" rectangle.
4. Vegetable Basket. Trim panel to include a ¼" seam outside brown outline. Sew a 2" wide blue *Cats Paws* strip to each side of the panel. Trim the piece back to a 1½" x 8½" rectangle.

- Three square panels. Trim panels to include a $\frac{1}{4}$ " seam around pictures. Sew a 2" blue *Cats Paws* strip around the school bag panel. Sew a 2" mustard *Cats Paws* strip around the shopping bag panel. Sew a 2" brown *Spraytime* strip around the blue handbag panel. Trim each of the panels back to $6\frac{1}{2}$ " squares.

Labels ** (6 needed)

- Centering the images, cut the labels into $3\frac{1}{2}$ " squares.
- Sew $1\frac{1}{2}$ " strips of matching or contrast fabric to each side of the labels. Trim them back to $4\frac{1}{2}$ " squares.

Half-Square Triangle Blocks (20 blocks needed.)

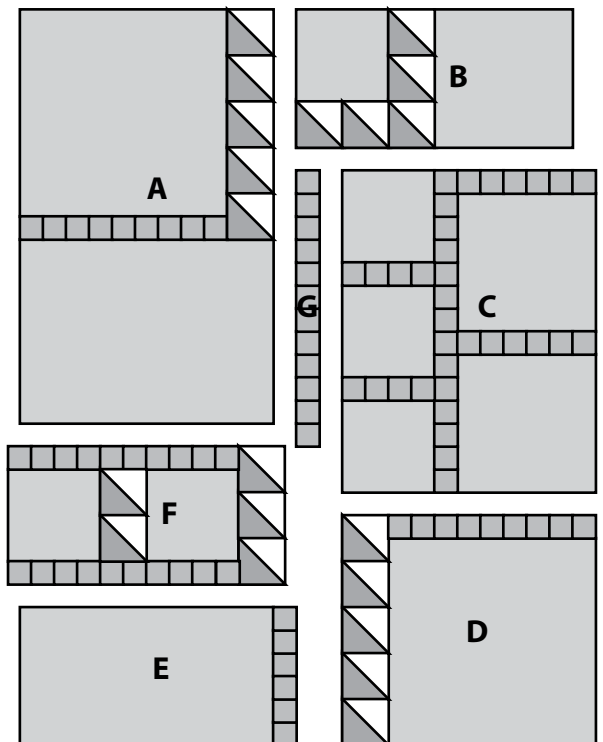
- Draw one diagonal line across the wrong side of the light coloured $2\frac{7}{8}$ " squares with a pencil.
- Match a darker fabric with each of the lighter marked squares.
- Sew a $\frac{1}{4}$ " seam either side of the diagonal line.
- Cut along the line, open out and press the seams to the darker fabric.

Strips of Squares

- Sew the eight $1\frac{1}{2}$ " x 20" strips together lengthwise (unit should measure $8\frac{1}{2}$ " wide).
- Cut twelve $1\frac{1}{2}$ " wide segments across the unit.
- Use these strips whole or by adding or unpicking squares as needed.

Assembling the Quilt

- Lay the panels and labels out as shown in the photograph.
- Fill in with the strips of squares and the half-square-triangle blocks.
- Follow the diagram to assemble the quilt into units.
- Sew unit C to unit D.
- Sew unit E to unit F.
- Sew unit G to unit C but do not sew the bottom 2".
- Sew unit B to units C/G.
- Sew unit A to units B/G.
- Sew Units E/F to Units A/G
- Complete the last seam.



Finishing the quilt

- First add the two turquoise *Cats Paws* $23\frac{1}{2}$ " long Inner Border strips to the top and bottom of the centre. Then add the two $32\frac{1}{2}$ " strips to the sides.
- Add the brown *Spraytime* $25\frac{1}{2}$ " long Outer Border strips to the top and bottom of the centre. Add the $37\frac{1}{2}$ " strips to the sides.
- Press the quilt top making sure all the seams are lying flat.
- Lay out the backing on a large flat surface with the wrong side facing up.
- Place the batting over the backing and smooth out any wrinkles.
- Now lay the quilt top over the batting making sure it is smooth.
- Use your favourite method to sandwich the layers - hand basting, machine basting, safety pins, spray basting or micro-tacking.
- Quilt by hand or machine using any design you fancy.
- If applying a mitred binding, join the binding strips together with mitred seams (to spread the bulk of the seam allowances).
- Fold the binding in half lengthwise and press.
- Bind the quilt.
- Don't forget to label your quilt adding any extra interesting details.

Congratulations and enjoy your quilt.

CAT

by The Henley Studio
 for makower uk +44 (0) 1491 579727
 www.makoweruk.com



***592/1 CAT IN A BAG LABELS**



***594/Q CAT PAWS**



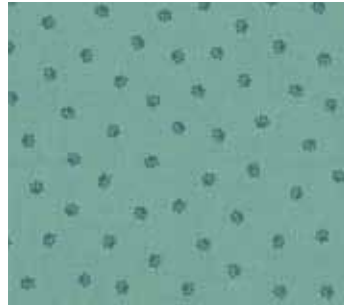
***594/N CAT PAWS**



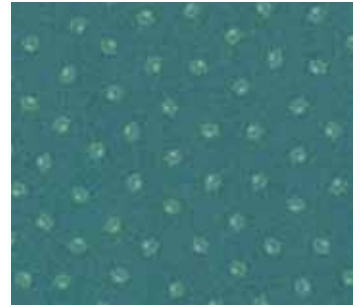
***593/Q SCATTER**



593/B SCATTER



***594/T CAT PAWS**



***594/B CAT PAWS**



596/1 CAT CROWD



***594/V CAT PAWS**



***595/1 PANEL (2 PANELS PER WIDTH)
 PIECE SHOWN 56CMS WIDE X 60CMS HIGH**



**Designed by Hilary Gooding
 Finished quilt size 30½" x 37½" (77 cm x 95 cm)
 * used in quilt also required 2800 Q04 & V47**