

BYZANTIUM

by Anja Townrow

Finished size 40" x 40" (102 x 102cms)



makoweruk
118 Grey's Road,
Henley on Thames,
Oxon RG9 1QW
www.makoweruk.com
Email: info@makoweruk.com



www.andoverfabrics.com

BYZANTIUM by Anja Townrow

using the Byzantium collection by *The Henley Studio*

Finished size 40" x 40" (102 x 102cms)

Available to download free from www.makoweruk.com

makoweruk +44(0)1491 579727 info@makoweruk.com

FABRIC REQUIREMENTS

BLUE VERSION	(GOLD VERSION)	AMOUNT	USEAGE
656/MB STRATA	656/MV STRATA	1,10m / 1 1/8 yd	BORDER & APPLIQUE
657/MB9 WAVY STRIPE	658/MX REEDS	30cms / 1/3 yd	APPLIQUE
662/MB9 DARK BLUE SCROLL	662/MX BLACK SCROLL	75cms / 5/8 yd 1,10m / 1 1/8 yd	APPLIQUE & DOUBLE BIAS BINDING BACKING
662/MQ4 CREAM SCROLL	658/MQ REEDS	80cms / 7/8 yd	BACKGROUND FOR APPLIQUE
662/MY GOLD SCROLL	662/MY GOLD SCROLL	FAT 1/8th 25 x 56cms / 9" x 22"	APPLIQUE
662/MB4 TURQUOISE SCROLL	662/MN ORANGE SCROLL	35cms / 1/2 yd	APPLIQUE
FOR THE APPLIQUE;	Heat & Bond(do not use SteamaSeam for this project!): 2m / 2 1/4 yds Stitch'nTear: 80 x 80 cms / 30x30 inches. Greaseproof paper for tracing: 3m / 3 1/4 yds		
FOR THE QUILTING AND APPLIQUE;	Threads:YLI fine metallic Gold and Madeira Dark metallic FS2/2 No.20 colour 438 (colour 424) Schmetz Top stitch 14/90 needle.		
WADDING:	1,10 x 1,10 (43" x 43")		

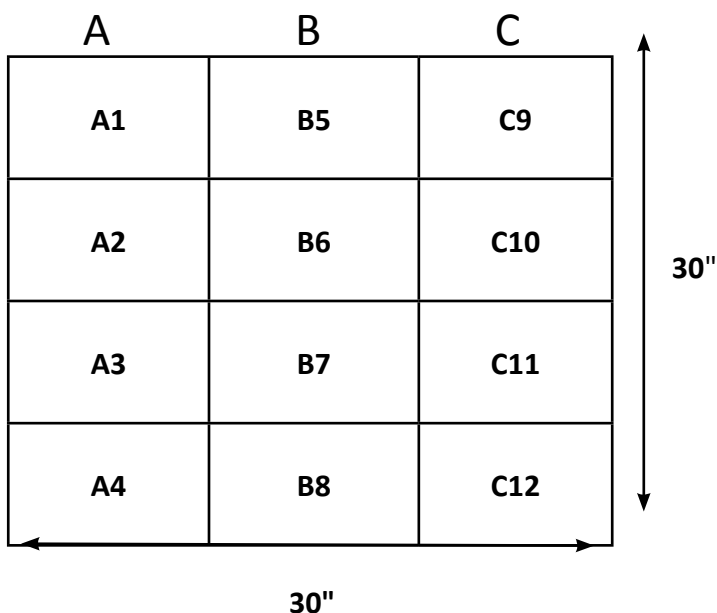
1. Prepare the full-size worksheet:

There are 12 partial worksheets: A1-4, B5-8, C9-12

Cut the worksheets on the solid outside line to obtain 12 rectangles, each measuring 7 1/2 "x 10".

Consult the worksheet lay-out to tape them together to form the whole quilt picture, finished size 30" x 30".

Note that the worksheet is given in mirror image, to make the appliqué preparation easier!



Worksheet layout NB: worksheet is in reverse image

2. BACKGROUND SQUARE

Cut a Cream square 30 ½" x30 ½"

3. PREPARE FOR MACHINE APPLIQUE: MAKE AN OVERLAY:

Trace the worksheet image onto tracing paper: use cheap greaseproof, tape sheets together as needed! Use a marker pen, so that the lines are visible when you turn the tracing over. You can now use this reverse side as an overlay to check placement. Set this aside for later.

4. Place the Heat&Bond over the worksheet, matt (non bubbly) side facing up.

Trace all pieces separately onto the matt side of Heat&Bond. Note that the dashed lines indicate an allowance to go beneath an overlapping piece. The two long pieces marked light blue(orange) have edges extended under the other pieces, i.e: they are overlapped. The dashed lines indicate where these light blue(orange) pieces finish. At top and/or bottom of the six long pieces, allow ¼" seam allowance to tuck into the borders.

5. Cut the Heat&Bond paper pieces with a small allowance.

Iron the Heat&Bond pieces onto the back of the relevant fabrics. Let cool. Now cut on the solid or dashed line. Place the cream background piece on a large pressing pad or folded towel. Remove the backing papers and arrange the six main long pieces onto the background. Place the light Blue(orange) pieces first, place the darker pieces over them, thereby overlapping. Use the overlay to check placement. Bond the pieces into place with a hot iron (see Heat&Bond instructions).

6. APPLIQUE MAIN PIECES:

Place the Stitch'n Tear under the work. Use a decorative thread to zig-zag(stitch length 1, width 3) all around the shapes. The sample was sewn with Madeira dark metallic thread and a 14 Schmetz Top Stitch needle. Use a fine cotton thread in the bobbin and loosen the top tension. Tie off thread ends at the back as you go along.

7. CUT THE BORDERS

Consult the picture to identify the four chosen strips to cut! Cut four strips 5 ½" wide, along the length of the fabric. Set aside the border strips. You can now cut the circles from the left-over fabric.

8. ADD APPLIQUE DETAILS

After sewing the six main long pieces, trace and cut the details (vases, circles and swirls), use the overlay for placement, and bond into place. Note that for the alternative bronze colour-way, some of the details, such as the colours of the vases and some circles, are different. Consult the picture, or change colours and shapes around as you like. Appliqué the rest of the shapes. Remove Stitch'nTear.

9. SEW THE BORDERS

Identify the centres and sew the borders to the sides, matching centres on quilt top and borders, leaving equal border pieces extending at the sides. Take ¼" seam allowances. Now mitre the corners at a 45° angle.

10. Layer Quilt Top, wadding and backing. Secure with pins

11. MACHINE QUILTING

With a walking foot, invisible thread in the top, fine cotton thread in the bobbin, stitch length 4, quilt in the ditch (i.e. edge of patches) around the appliqué shapes. With YLI Gold Fine Metallic Thread, stitch Parallel lines in the cream patches and vases. Quilt wavy lines in the border, following the print. Quilt free-hand swirls (with a darning foot) in the blue (black) shapes.

12. BINDING

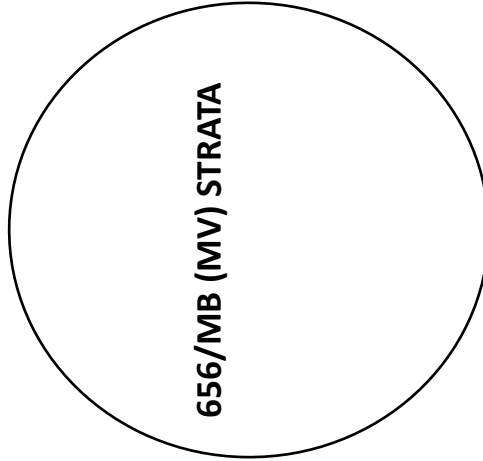
Trim backing and binding even with the quilt top. Cut (bias) binding strips 2 ½" wide. Join lengths to obtain a strip measuring 165". Fold and press along the length with wrong sides together. Place raw edges even with raw quilt edge and stitch with a ¼" seam. Turn binding to the back, leaving about ¼" showing at the front. Pin and secure to the backing with a blind stitch by hand.

Congratulations and well done!

A1

UNDER LAP

662/MB9 BLUE
/(MX BLACK) SCROLL



662/MB4 TURQUOISE (MN ORANGE) SCROLL

UNDER LAP

657/MB9
NAVY WAVY STRIPE
(658/MX REEDS)

662/MQ4
CREAM SCROLL
(658 MQ REEDS)

**NB; THESE WORK SHEETS ARE IN MIRROR IMAGE. TEMPLATE SIZE 7½" x 10"
() GIVES FABRIC DESIGN AND COLOUR REQUIRED FOR BLACK/GOLD VERSION**

A2

662/MB9 BLUE
(MX BLACK) SCROLL

UNDER LAP

662/MY GOLD
(MQ4 CREAM) SCROLL

662/MB4 TURQUOISE (MN ORANGE) SCROLL

656/MB (MV)
STRATA

657/MB9
NAVY WAVY STRIPE
(658/MX REEDS)

UNDER LAP

662/MQ4
CREAM SCROLL
(658 MQ REEDS)

**NB; THESE WORK SHEETS ARE IN MIRROR IMAGE. TEMPLATE SIZE 7½" x 10"
() GIVES FABRIC DESIGN AND COLOUR REQUIRED FOR BLACK/GOLD VERSION**

A3

656/MB
(MV) STRATA

662/MB4 TURQUOISE
(MN ORANGE) SCROLL

662/MB9 BLUE
(MX BLACK) SCROLL

662/MY GOLD
(MQ4 CREAM)
SCROLL

UNDER LAP

657/MB9 NAVY WAVY STRIPE
(658/MX REEDS)

662/MQ4
CREAM SCROLL
(658 MQ REEDS)

**NB; THESE WORK SHEETS ARE IN MIRROR IMAGE. TEMPLATE SIZE 7½" x 10"
() GIVES FABRIC DESIGN AND COLOUR REQUIRED FOR BLACK/GOLD VERSION**

A4

662/MB9 BLUE
(MX BLACK)
SCROLL

662/MQ4 CREAM SCROLL
(658 MQ REEDS)

UNDER LAP

656/MB (MV)
STRATA

662/MB4 TURQUOISE (MN ORANGE) SCROLL

657/MB9
NAVY WAVY STRIPE
(658/MX REEDS)

UNDER LAP

662/MQ4 CREAM SCROLL
(658 MQ REEDS)

**NB; THESE WORK SHEETS ARE IN MIRROR IMAGE. TEMPLATE SIZE 7½" x 10"
() GIVES FABRIC DESIGN AND COLOUR REQUIRED FOR BLACK/GOLD VERSION**

657/MB9
NAVY
WAVY
STRIPE
(658/MX)
REEDS

B5

662/MQ4 CREAM SCROLL
(658 MQ REEDS)

657/MB9 NAVY
WAVY STRIPE
(658/MX REEDS)

657/MB9 NAVY
WAVY STRIPE
(658/MX REEDS)

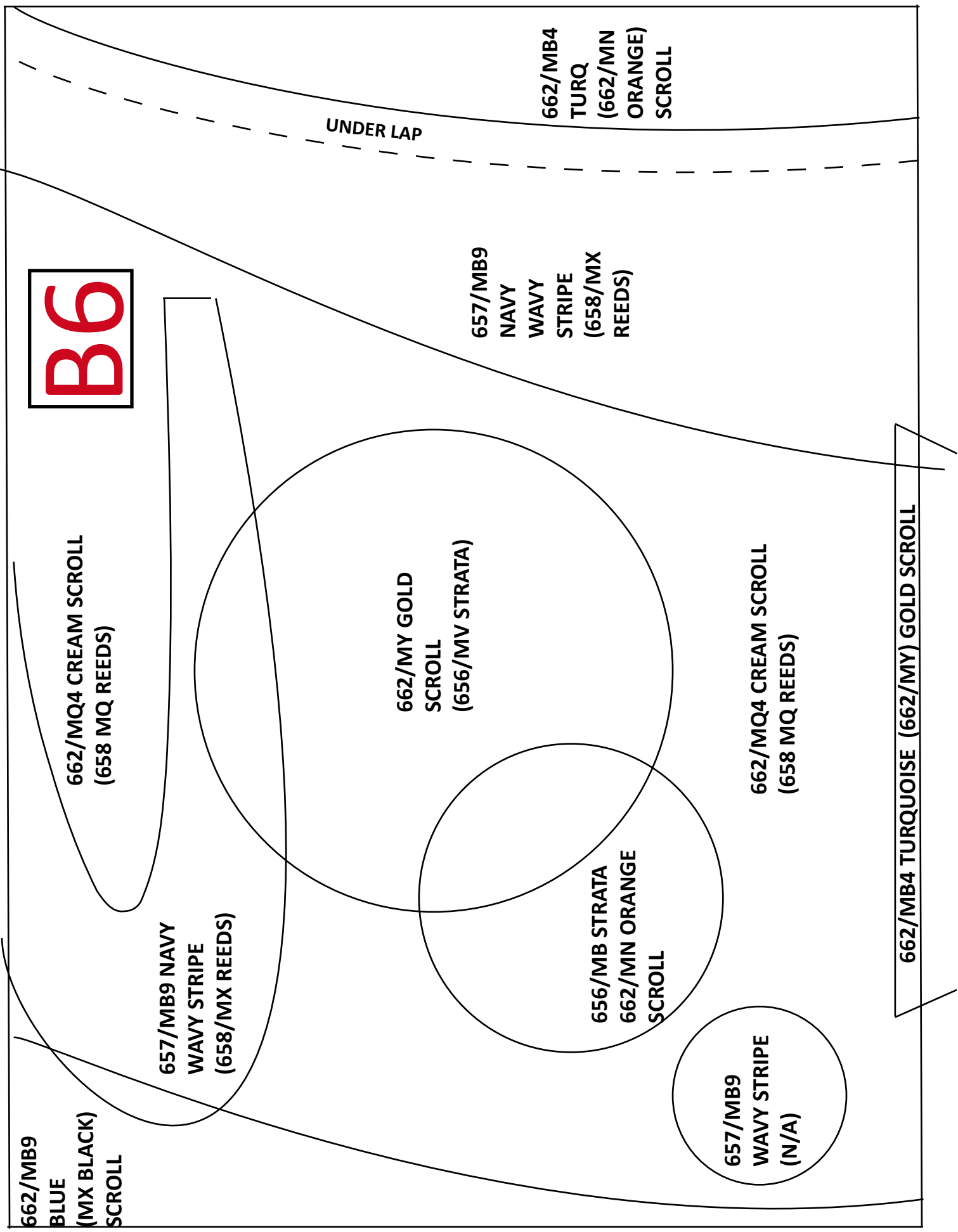
662/MQ4 CREAM SCROLL
(658 MQ REEDS)

662/MQ4 CREAM SCROLL
(658 MQ REEDS)

657/MB9 NAVY
WAVY STRIPE
(658/MX REEDS)

662/MB9 BLUE
(MX BLACK) SCROLL

**NB; THESE WORK SHEETS ARE IN MIRROR IMAGE. TEMPLATE SIZE 7½" x 10"
() GIVES FABRIC DESIGN AND COLOUR REQUIRED FOR BLACK/GOLD VERSION**



B6

662/MB9
BLUE
(MX BLACK)
SCROLL

662/MQ4 CREAM SCROLL
(658 MQ REEDS)

657/MB9 NAVY
WAVY STRIPE
(658/MX REEDS)

662/MY GOLD
SCROLL
(656/MV STRATA)

656/MB STRATA
662/MN ORANGE
SCROLL

662/MQ4 CREAM SCROLL
(658 MQ REEDS)

657/MB9
WAVY STRIPE
(N/A)

662/MB4 TURQUOISE (662/MY) GOLD SCROLL

657/MB9
NAVY
WAVY
STRIPE
(658/MX
REEDS)

662/MB4
TURQ
(662/MN
ORANGE)
SCROLL

UNDER LAP

**NB; THESE WORK SHEETS ARE IN MIRROR IMAGE. TEMPLATE SIZE 7½" x 10"
() GIVES FABRIC DESIGN AND COLOUR REQUIRED FOR BLACK/GOLD VERSION**

662/MB4
TURQ
(662/MIN
ORANGE)
SCROLL

UNDER LAP

B7

657/MB9
NAVY
WAVY
STRIPE
(658/MX
REEDS)

662/MQ4 CREAM SCROLL
(658 MQ REEDS)

662/MB4 TURQUOISE
(662/MY) GOLD SCROLL

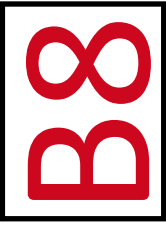
UNDER LAP

657/MB9
NAVY
WAVY
STRIPE
(662/MIN
ORANGE
SCROLL)

662/MQ4
CREAM
SCROLL
(658 MQ
REEDS)

662/MB9
BLUE
(662/MX)
BLACK
SCROLL

NB; THESE WORK SHEETS ARE IN MIRROR IMAGE. TEMPLATE SIZE 7½" x 10"
() GIVES FABRIC DESIGN AND COLOUR REQUIRED FOR BLACK/GOLD VERSION



662/MB9
BLUE
(662/MX)
BLACK
SCROLL

657/MB9
NAVY
WAVY
STRIPE
(662/MN
ORANGE
SCROLL)

662/MB4 TURQUOISE
(662/MY) GOLD SCROLL

657/MB9
NAVY
WAVY
STRIPE
(658/MX
REEDS)

UNDER LAP

662/MIQ4
CREAM
SCROLL
(658 MIQ
REEDS)

662/MY GOLD
(MIQ4 CREAM)
SCROLL

662/MB4
TURQ
(662/MN
ORANGE)
SCROLL

UNDER LAP

**NB; THESE WORK SHEETS ARE IN MIRROR IMAGE. TEMPLATE SIZE 7½" x 10"
() GIVES FABRIC DESIGN AND COLOUR REQUIRED FOR BLACK/GOLD VERSION**

C9

657/MB9
WAVY STRIPE
(658 MX
REEDS)

662/MQ4
CREAM
SCROLL
(658 MQ
REEDS)

662/MB4 TURQ
(656/MV) STRATA

662/MB9 BLUE
(MX BLACK) SCROLL

662/MQ4
CREAM
SCROLL
(658 MQ
REEDS)

662/MY GOLD
(662/MY)
GOLD SCROLL

662/MB4
TURQ
(662/MN
ORANGE)
SCROLL

**NB; THESE WORK SHEETS ARE IN MIRROR IMAGE. TEMPLATE SIZE 7½" x 10"
() GIVES FABRIC DESIGN AND COLOUR REQUIRED FOR BLACK/GOLD VERSION**

657/MB9 NAVY WAVY STRIPE (658/MX REEDS)

UNDER LAP

C10

662/MB4 TURQ
(656/MV) STRATA

662/MQ4
CREAM
SCROLL
(658 MQ
REEDS)

662/MY GOLD
(662/MY)
GOLD SCROLL

662/MB9 BLUE
(MX BLACK) SCROLL

662/MQ4
CREAM
SCROLL
(658 MQ
REEDS)

UNDER LAP

657/MB9
NAVY WAVY
STRIPE
(658/MX
REEDS)

662/MB4
TURQ
(662/MN
ORANGE)
SCROLL

656/MB STRATA
(656/MV) STRATA

**NB; THESE WORK SHEETS ARE IN MIRROR IMAGE. TEMPLATE SIZE 7½" x 10"
() GIVES FABRIC DESIGN AND COLOUR REQUIRED FOR BLACK/GOLD VERSION**

662/MY GOLD
(662/MY)
GOLD SCROLL

C11

662/MQ4 CREAM SCROLL
(658 MQ)REEDS

657/MB9 NAVY
WAVY STRIPE
(658/MX REEDS)

662/MB9 BLUE
(MX BLACK) SCROLL

657/MB9 NAVY
WAVY STRIPE
(658/MX REEDS)

662/MQ4
CREAM
SCROLL
(658 MQ)
REEDS

662/MB4 TURQ
(662/MN ORANGE) SCROLL

UNDER LAP

**NB; THESE WORK SHEETS ARE IN MIRROR IMAGE. TEMPLATE SIZE 7½" x 10"
() GIVES FABRIC DESIGN AND COLOUR REQUIRED FOR BLACK/GOLD VERSION**

662/MB4 TURQ
(662/MN ORANGE)
SCROLL

C12

657/MB9 NAVY
WAVY STRIPE
(N/A)

657/MB9 NAVY
WAVY STRIPE
(658/MX REEDS)

662/MQ4
CREAM
SCROLL
(658 MQ)
REEDS

662/MB9 BLUE
(MX BLACK) SCROLL

662/MY GOLD
(MQ4 CREAM)
SCROLL

657/MB9 NAVY
WAVY STRIPE
(658/MX REEDS)

662/MQ4 CREAM
SCROLL
(658 MQ) REEDS

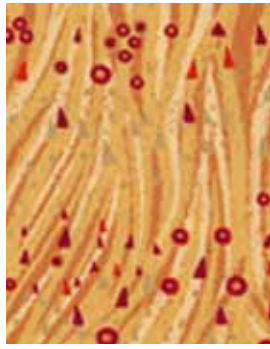
NB; THESE WORK SHEETS ARE IN MIRROR IMAGE. TEMPLATE SIZE 7½" X 10"
() GIVES FABRIC DESIGN AND COLOUR REQUIRED FOR BLACK/GOLD VERSION

BYZANTIUM by *The Henley Studio*

from makoweruk +44(0)1491 579727 www.makoweruk.com info@makoweruk.com



656/MV STRATA



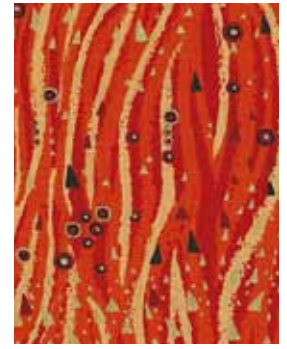
657/MY WAVY STRIPE



659/MN BLOCKS



657/MX WAVY STRIPE



657/MN WAVY STRIPE



662/MX SCROLL BLK



658/MX REEDS



662/MR6 SCROLL



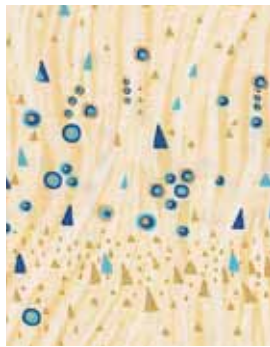
658/MR REEDS



662/MN SCROLL



*656/MB STRATA



657/MQ4 WAVY STRIPE



659/MB BLOCKS



658/MB REEDS



*657/MB9 WAVY STRIPE



*662/MY SCROLL



658/MQ REEDS



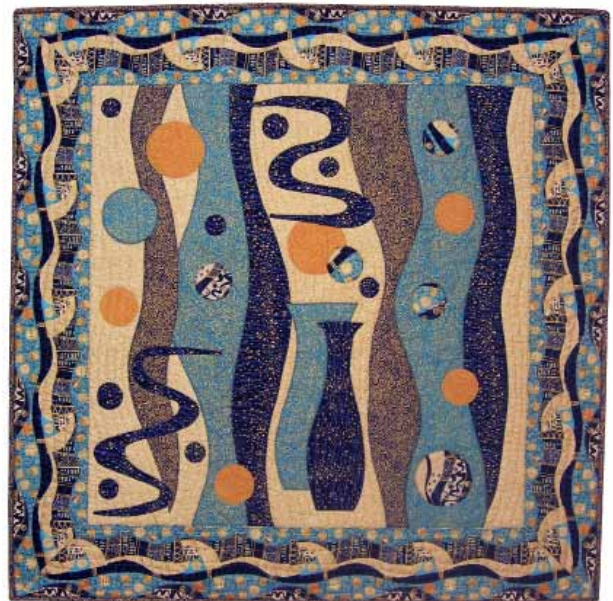
*662/MB4 SCROLL



*662/MQ4 SCROLL



*662/MB9 SCROLL BLUE



BYZANTIUM FREE QUILT PROJECT
by Anja Townrow

Finished size 40" x 40" (102 x 102cms)

Available to download from Feb 2011

www.makoweruk.com

*fabrics used in quilt